



# dB24 Software for CEL-240 Sound Level Meter

# OPERATOR'S MANUAL

## HB3336-01

Go to [Preface](#)

#### **CASELLA CEL**

Regent House  
Wolseley Road  
Kempston  
Bedford  
MK42 7JY, U.K.  
Phone: +44 (0) 1234 844 100  
Fax: +44 (0) 1234 841 490  
E-mail: [info@casellacel.com](mailto:info@casellacel.com)  
Web: [www.casellacel.com](http://www.casellacel.com)

#### **CASELLA USA**

17 Old Nashua Road,  
# 15, Amherst  
NH 03031  
USA  
Toll Free: +1 (800) 366 2966  
Fax: +1 (603) 672 8053  
E-mail: [info@casellaUSA.com](mailto:info@casellaUSA.com)  
Web: [www.casellaUSA.com](http://www.casellaUSA.com)

#### **CASELLA ESPANA S.A.**

Polígono Európolis  
Calle C, nº4B  
28230 Las Rozas - Madrid  
Spain  
Phone: + 34 91 640 75 19  
Fax: + 34 91 636 01 96  
E-mail: [online@casella-es.com](mailto:online@casella-es.com)  
Web: [www.casella-es.com](http://www.casella-es.com)

#### **CASELLA CHINA ( 中国 )**

地址  
北京东城区东方广场W1座911室  
邮编: 100738  
电话: 0086 10 85183141  
传真: 0086 10 85183143  
电子邮件: [info@casellameasurement.cn](mailto:info@casellameasurement.cn)  
网址: [www.casellameasurement.com](http://www.casellameasurement.com),  
[www.casellameasurement.cn](http://www.casellameasurement.cn)

## **PREFACE**

Back to [Cover](#)

### **MANUAL CONVENTIONS**

Details the priority of Warnings, Cautions and Notes that may apply throughout this manual.

### **INTRODUCTION**

Brief overview of the equipment/application.

### **MINIMUM PC REQUIREMENTS**

Minimum PC requirements necessary to run the software.

### **SOFTWARE INSTALLATION**

Details how to load dB24 for the CEL-240 Instrument.

### **PREPARATION FOR USE**

Describes the first steps to using the CEL-240 Digital Sound Level Meter.

### **CEL-240 – PC INTERFACE**

Details how to get the PC and the CEL-240 to communicate.

### **CAPTURE DATA TO A PC**

This section of the manual details how to store data onto a PC.

### **SWITCH OFF THE CEL-240**

Describes the shut down procedure.

### **SERVICE AND WARRANTY**

Casella's after sales policy on the software covered in this manual.

## **MANUAL CONVENTIONS**

### **WINDOWS, DIALOG BOXES, BUTTONS AND MENUS**

Throughout this handbook the following conventions are used:

Names of buttons, menus and related items are written in *Italics* to distinguish them from the surrounding text, whereas window and dialog names are written with initial capital letters, for example:

Click the *OK* button to save the changes made in the Configuration dialog.

The vertical bar symbol (|) is used to denote the path for hierarchical menu items, For example:-

From the Main Menu select *View | Properties...*

### **KEYBOARD AND MOUSE**

Throughout this handbook the following conventions are used:

Key names are spelled with an initial capital and are underlined. A plus sign denotes a key combination, for example:-

Press Ctrl+A to select all the text in the window.

When a mouse click is indicated, the default is always a left-click unless otherwise specified, for example:-

Right-click and select *Properties...*

Back to [Preface](#)

## INTRODUCTION

Congratulations on your purchase of the CEL-240 Digital Sound Level Meter. The CEL-240 has been designed to perform accurate noise measurements through a wide decibel range. The CEL-240 is a digital sound level meter, designed for stable, reliable performance, fully compliant with international sound level meter standards. The dB24 software package was developed to enable the CEL-240 to interface with any PC conforming to the [minimum PC requirements](#). dB24 software allows the 'C' and 'A' weighted sound pressure to be stored to your PC every second, with the time weighting (Fast, Slow or Impulse) currently selected on the CEL-240.

This Operator's Manual details how to install and use the dB24 software to ensure you get the most benefit from your CEL-240.

The principle components for operation are detailed in Figure 1.



Figure 1: CEL-240 Digital Sound Level Meter

1. Microphone 2. Power ON / OFF key 3. Display 4. Left Key 5. Right key  
6. USB PC Output 7. Audio in/out Socket

Back to [Preface](#)

## **MINIMUM PC REQUIREMENTS**

The PC must meet the following minimum requirements.

- Pentium III – 1Ghz
- 256MB RAM
- 20GB Hard Drive
- CD Drive for Program Installation
- Super VGA Colour Monitor. 1024 x 768 16M colour Recommended
- USB (2.0)

Operating System

- Windows 2000 (service pack 4)
- Windows XP Home or Professional
- Windows NT4 (service pack 6a)
- Windows Vista

Back to [Introduction](#)

Back to [Preface](#)

## **SOFTWARE INSTALLATION**

Before commencing installation it is recommended that a back-up copy be made of the Program CD. Use the copy to install the software and keep the original in a safe place.

1. Insert the Program CD into the CD Drive.
2. The CD will automatically run. If the CD does not automatically run, access the CD drive and run 'SETUP.EXE'.
3. The Setup Wizard will be displayed on the screen. Read the Agreement and tick the Check Box. This will enable the *Next* button. Click the *Next* button and follow the onscreen instructions.
4. When the software has been successfully installed click the *Finish* button. Remove the CD from the CD Drive.

Back to [Preface](#)

## PREPARATION FOR USE

**PROCEDURE** (Refer to Figure 2)

1. Open the Battery Cover.
2. Fit three new AA Alkaline (or NiMH) batteries according to the polarity in the battery compartment.
3. Close the Battery Cover.

**Notes:**

To prevent the CEL-240 switching OFF while in use, always fit new batteries when the battery indicator (1) shows battery strength is low. However, when connected to the PC's USB port via the –CMC51 cable, the CEL-240 will be continuously powered from the PC.

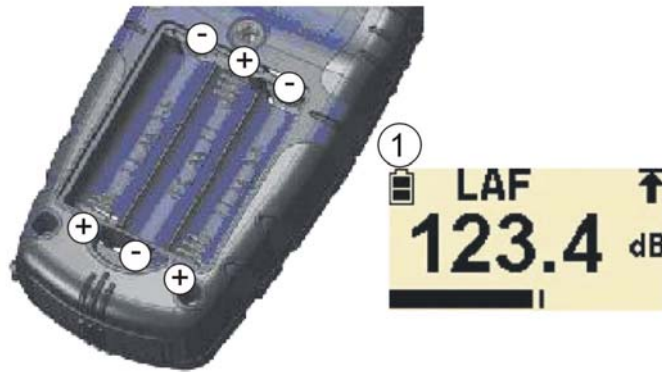


Figure 2: Fitting Batteries

Back to [Preface](#)

## CEL-240 – PC INTERFACE

1. Connect the USB lead to the CEL-240 socket shown in Figure 1 and to the PC.
2. Switch **ON** the CEL-240 if not already switched ON, shown in Figure 1.
3. Start dB24 by double clicking the dB24 shortcut on your desktop.
4. A 'virtual' CEL-240 will be displayed on the PC screen.

Back to [Preface](#)

## CAPTURE DATA TO A PC

1. Connect the USB lead as detailed in this manual.
2. Use the cursor to click the LEFT button on the displayed virtual instrument to start data capture.
3. A 'Save As' window is displayed. Select a suitable file name and location and press Save. (Figure 3). A red indicator on the virtual CEL-240 will flash during data capture.

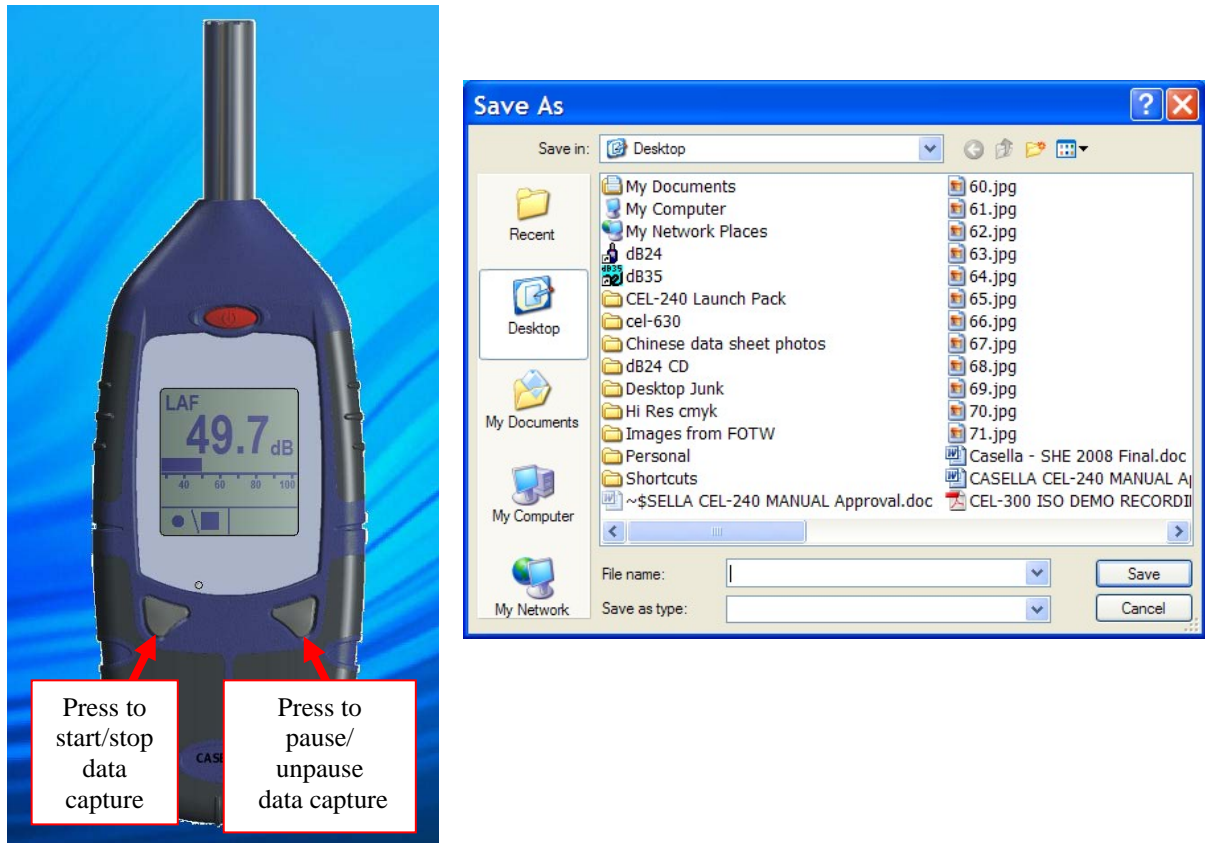


Figure 3: 'Save As' Window

4. Press the RIGHT button on the displayed virtual instrument to stop data capture.
5. The data will automatically be saved in a .csv format. This can be opened with Microsoft Excel.

## SWITCH OFF THE CEL-240

When the required measurements have been stored, press and hold the Power key (Refer to Figure 4) for three seconds to switch OFF the CEL-240. A 'door' display will be shown counting down 3, 2, 1.

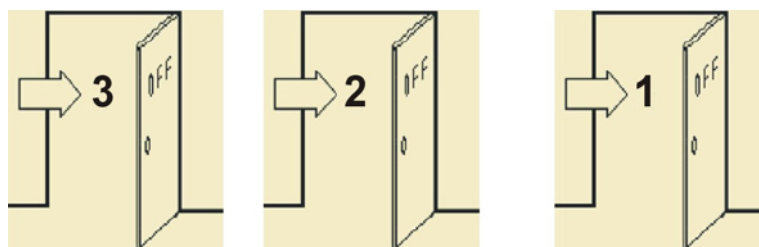


Figure 4: Switch OFF the CEL-240

Back to [Preface](#)

## **SERVICE AND WARRANTY**

The manufacturers undertake to replace any disk containing significant errors that are directly attributable to design fault or manufacture that make the program unusable, and which become apparent during the warranty period. In order to take advantage of this warranty, the disk or disks must be returned, carriage paid to the manufacturer's factory or accredited agent. The warranty period runs for three months from the date of receipt of goods.

Casella CEL Ltd's liability is limited to items of their manufacture and they do not accept liability for any loss resulting from the operation of, or the interpretation of results obtained by using this software. All technical information for individual sets of software is filed under the version and issue number given on the installation disks, therefore the version and issue numbers should be quoted on all correspondence concerning this software. In the event of a malfunction appearing during the warranty period, the disk or disks should be returned either to Casella CEL Ltd's local agent or the Casella CEL Ltd's Customer Service's Department at Bedford. Please include the following information:

Instrument type(s), serial number(s) and firmware version number(s)

Customer name and address

Contact name and phone number

Details of any PC and software involved, including version number(s)

Reason for returning the equipment with a detailed description of the fault

List of any error messages that may have been displayed.

Back to [Preface](#)

END