

4.1 Mega Pixel Digital Camera

Owner's Manual



© 2008 Sakar International, Inc. All rights reserved.

Windows and the Windows logo are registered trademarks of Microsoft Corporation.

All other trademarks are the property of their respective companies.

Table of contents

Introduction	2
Key features	2
What your camera includes.....	2
Computer System Requirements for Windows 2000/XP	3
Computer System Requirements for Windows Vista	3
Computer System Requirements for Macintosh	3
A Quick Look at Your Camera	4
Icons on the LCD Screen	5
Preparing Your Camera for Use	5
Installing SD Memory Card	7
Starting Your Camera	9
Installing PhoTags Express Software	13
Transferring photos to your PC	16
Download Photos using PhoTags Express	17
Everything you need to get the most from your photos.....	22
Viewing Videos on Your Computer.....	24
Maintenance of Your Digital Camera.....	24
Sakar Warranty Card.....	24
Appendix A: Specifications	26
Appendix B: Troubleshooting	27

Introduction

Thank you for purchasing the 4.1mega pixel Digital Camera. Everything you need to take quality photos and videos is included with you camera. Please read this manual carefully first in order to get the most out of your digital camera.

Key features

- Digital Video resolution 320x240 pixels.
- 4.1 mega pixels camera with 3 digital camera resolutions- 2304x1728 pixels (4.1M), 2048x1536 pixels (3M), 640x480 pixels (VGA).
- 1.5" color TFT-LCD
- Internal memory SDRAM 16MB, support SD/MMC card (not included)
- SD Memory Card slot accepts SD compatible memory card up to 2 GB.
- Built-in flash
- PhoTags Express software for managing and enhancing your photos, printing, sending photo by emails and much more.

What your camera includes

- Digital Camera
- PhoTags Express software Installation CD
- USB cable
- User's manual
- Strap

Computer System Requirements for Windows 2000/XP

To be able to download photos and videos to your PC you will need the following minimum configuration:

- Pentium processor or above with Windows 2000, XP
- 128 MB RAM, more than 125MB free disk space.
- Available USB Interface
- CD-ROM Driver
- Recommended screen resolution 1024 X 768 pixels or higher.
- 16-bit color or higher display adaptor.

Computer System Requirements for Windows Vista

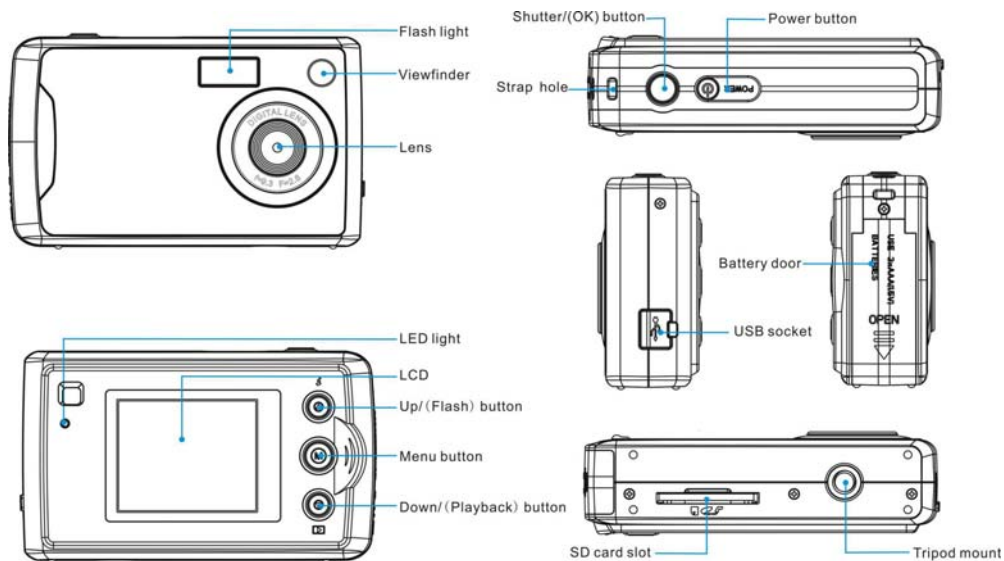
To be able to download photos or videos to your PC you will need the following minimum configuration:

- Windows Vista
- 800MHz processor and 512 MB of system memory
- 20GB hard driver with at least 15GB of available space
- Support for Super VGA graphics
- Available USB Interface
- CD-ROM Driver

Computer System Requirements for Macintosh

- Power Macintosh G3 500 MHz or higher
- Mac OS X version 10.2.6 or later
- 128 MB or more available system RAM (256 MB recommended), 150 MB free disk space
- 800 x 600 or higher-resolution monitor displaying millions of colors

A Quick Look at Your Camera



Icons on the LCD Screen



— Self-timer



— Motion Photography



— Delete All



— Delete single



— Photo Resolution Selection



— SD card inserted



— Forced Flash



— Flash off



— High Resolution



— Normal Resolution



— Low Resolution



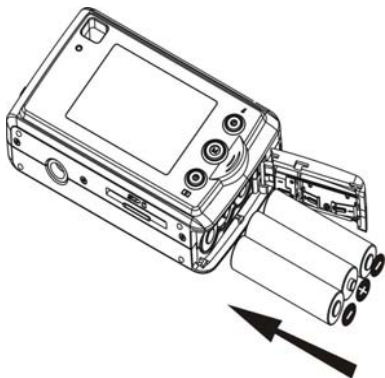
— photos/videos
you have taken

Preparing Your Camera for Use


Battery Installation

Your camera requires three AAA batteries. Insert the battery into the camera:

1. Slide and open the battery compartment.
2. Please make sure that the correct battery is inserted with the correct polarity facing up.
3. Please refer to the diagram as below for the correct insertion method:



4. Close battery door.

When the Low Battery icon  is flashes on the LCD, it indicates your camera has insufficient battery power, and will automatically power off after 60 seconds. Please replace the batteries before you turn the camera back on.

Note:

1. If you don't intend to use your camera for an extended period, remove the batteries to avoid battery leakage and corrosion.
2. On replacing the batteries the test photos/videos in your Digital Camera will be lost. Please download your test photos/videos to your PC as soon as possible. Photos/videos on the SD memory card will not be affected.
3. **Do not mix old and new batteries.**
4. **Do not mix alkaline, standard (carbon-zinc), or rechargeable (nickel-cadmium metal hydride) batteries.**


Installing SD Memory Card

Your camera has a memory card slot that enables you to insert any “SD” compatible memory card. Adding a memory card will allow you to increase the capacity of your camera before you have to transfer photos/videos to your PC.

Note: Limited internal memory is provided for test images. An SD memory card is required for normal use. Installing the SD memory card as below:

1. Locate the Memory Card slot.
2. Insert the Memory card into the slot in the correct direction. (as shown below)






3. Push the card in until you feel and hear it “click” into position. The top of the card should be flushed with the surface of the camera. A  icon will appear on the top right of the LCD screen.

4. Once the external memory card is inserted into the camera all the images taken will be stored on the external memory card.

Important Note:

1. You have to insert the SD memory card with your camera in power off status, otherwise the camera will be turned off automatically when you inserted the SD memory card. So please download the test photos/videos to PC before inserting an SD memory card and inserting an SD memory card before power on your camera.
2. Your camera will be automatically power off when you take out the SD memory card from your camera.
3. If you have inserted an SD memory card, a warning "**PLASE NOTE, your memory card format is not compatible with this camera, press Shutter button to change**" may show on the LCD screen when you power on your Digital Camera. And now you need to follow the steps as below:

- Image files cannot be recorded or erased if a write-protect icon  shown on the screen. Please unlock your SD card and insert again.
- This product included Supports SD card up to 2GB.
- SD card format compatibility: **FAT(FAT16)**
 1. Inserted SD card in the camera.
 2. If " " is displayed on the screen after you power on your camera, this card is not in **FAT** format.
 3. Press UP/DOWN button to select " " (The selected icon will flash on the screen), then press SHUTTER button to format your memory.

Caution:

- Please insert your SD card before power on your camera, and remove it after the camera power off.
- Formatting will delete all the data on the SD Memory Card. To keep your data safe, please backup the data before the memory card plug in your camera.
- Do not remove the SD Memory Card during formatting as this may damage the card and render it unusable.
- SD Memory Cards formatted on a PC or device other than the camera cannot be used. Be sure to format the card with the camera.
- All the data in the built-in memory will be deleted if no SD Memory Card has been inserted in the camera when you change your battery.

Starting Your Camera

Press the Power button to turn on your camera, the LCD screen will be light up.

This will confirm that your camera is on and ready for use.

Press and hold the Power button for 3 seconds to power off your camera.

Camera mode

Note: You can press the Menu button repeatedly in order to enter or exit the menu quickly.

This is the default mode on your camera.

Taking photos

You can compose your shot using the LCD screen or viewfinder. Hold the camera steady and press the Shutter/OK button to take your photo. A tip: “Photo Taking Hold Camera Steadily” will show on LCD, you need to hold your camera steady for taking photos, otherwise the photo may be blurry. The LED light will flash and there will be a short delay while the camera saves the photo to memory.

Note:



1. When the camera's memory (photo capacity) is full, the camera will sound "beeps" when you attempt to take more photos and show **"Memory Full! Transfer Test Images to PC and Insert a SD Memory Card to Take More Images!"**
2. If you see "The background is too dark, Please Use the Flash Light" on the LCD, please turn on the flash function for compensate the background light conditions (Please refer to below for flash operation).
Please download these photos to PC as soon as possible.

Flash

In low light conditions, it is best to use the built-in flash. You can also use the flash to compensate for backlight conditions.

To set the flash:


In camera mode:

1. Press UP/Flash until the flash function is forced on .
2. Press the UP/Flash button until the flash function is turned off .

Note: This function will not work if your battery power is insufficient.

Self-Timer


You can include yourself in a photo by using this feature to delay the time between your pressing the Shutter/OK and when the photo is actually taken. It is recommended that you use a tripod when you use the self-timer function.

1. Press the Menu button.
2. Press the Up/Down button repeatedly to select the  icon on the LCD.

3. Press the Shutter/OK button again within 5 seconds. The timer runs for 10 seconds before the photo is taken.

Note: the camera will return to the camera mode if you don't press the Shutter/OK button within 5 seconds.


Motion Photography

1. Press the Menu button.
2. Press the Up/Down button repeatedly to select icon  on the LCD.
3. Press the Shutter/OK button within 5 seconds. The LED will flash.
4. Press the Shutter/OK button again to stop and save it to AVI file.

Note:

1. The photos taken in this mode will be saved as AVI format (without audio). And can be played back on Media Player and Quick time. You can not playback the AVI files in your Digital Camera.
2. The shooting time varies slightly depending on the available space on your camera.
3. The shooting time will be displayed on the LCD screen.

Photo resolution setting

1. Press the Menu button.
2. Press the Up/Down button repeatedly to select the  icon on the LCD.
3. Press the Shutter/OK button within 5 seconds.
4. Press the Up/Down button to select the photo resolution you want:



: High resolution (4.1M)



: Normal resolution (3M)



: Low resolution (VGA)

5. Press the Shutter/OK button to confirm and change the setting.

Playback mode


Note: You can press the Menu button repeatedly in order to enter or exit the menu quickly.

This mode is for you to preview the photos you have taken. Make sure you have taken photos before you change to this mode.

View photos:


1. Press the Down button to enter the Playback mode.
2. Press the Up button to preview the photos manually one by one going forward.
3. Press the Down button to preview the photos manually one by one going backward.

Delete single photo

1. Select a photo you want to delete.
2. Press the Menu button. The  icon will appear on the LCD,
3. Press the Shutter/OK button.
4. Press the Up/Down button to select the “√”.
5. Press the Shutter/OK button to confirm the deletion.

Note: At step 3 you can select “x” and then Press the Shutter/OK button to exit without deleting.

Delete all photos

1. Press the Menu button repeatedly and press Up/Down button until the  icon is selected.
2. Press the Shutter/OK button.
3. Press the Up/Down button to select the “√”.
4. Press the Shutter/OK button to confirm the deletion.

- Note:**
1. At step 3 you can select “x” and then Press the Shutter/OK button to exit without deleting
 2. Press the Down button to enter Playback mode and you can press the Shutter/OK button to revert back to the Camera mode.
 3. You cannot access the playback mode if there are no photos in your camera.

Installing PhoTags Express Software

Before attempting to install the software, make sure that you do not have the camera’s USB cable attached to your computer.

Note: The PhoTags Express software is only compatible on Windows operating systems. For Mac users you may transfer the photos and videos from your camera by simply connecting the camera to the USB port of your computer.

Software Installation

1. Insert the CD into your CD-Rom drive. Make sure that your camera is **not** connected to the computer.
2. On the “**Install your camera software**” screen, select the camera from the dropdown list on the left and then click the “Install” button to install the PhoTags Express software.



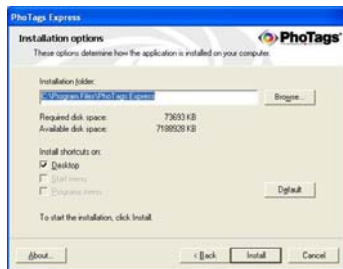
3. On the “PhoTags Express” screen, click the “**Next**” button.



4. Please review the license terms and click the “**Agree**” button to continue.



5. Let the “PhoTags Express” installer create the folder where the program will be installed to, and then click **“Install”**.



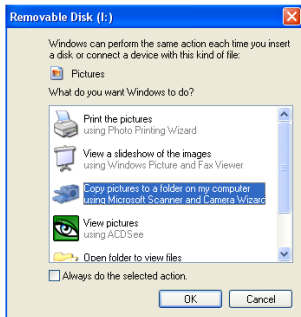
6. Click **“Finish”** to let the “PhoTags Express” installer finish the installation program.



7. Congratulations!! You have successfully installed the “PhoTags Express”.

Transferring photos to your PC

Connect your camera to the computer correctly with USB cable, the screen will be shown a window (**Removable Disk F:**) as below:



NOTE: Now you can download the photos to your computer with two methods as below:

1. Download photos directly from windows

Choose **“copy pictures to a folder on my computer”** on the **Removable Disk (F:)** window. After you click **“OK”**, there will be shown some windows on the screen step by step, you are only required to follow the description and click the buttons that are defaulted by the system to finish transferring.

Or you can:

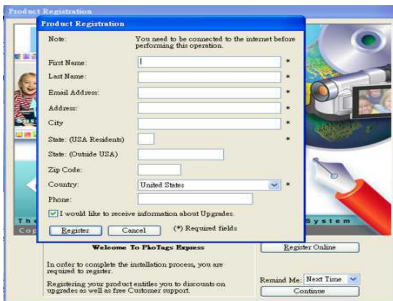
1. Click on the START button in Windows.
2. Click on the MY COMPUTER Icon on the desktop.
3. Your memory card will appear as a REMOVABLE STORAGE DEVICE.
4. Click on the REMOVABLE STORAGE DEVICE to view the images. The images are stored in the subfolder called DCM100.
5. You can now copy and paste the images to any directory you choose.

Download Photos using PhoTags Express

- a. Double click the PhoTags Express icon on the desktop to launch the application.



- b. Click the **“Register online”** button on the window that appears.
Or you can directly click **“Continue”** for registration at a later time.



2. After this step, the main window will appear on the screen.



- a. Plug the camera into the USB port of your computer and wait for the computer to recognize the camera as a USB device.
- b. Click the **“Get Photos”** button. The Get Photos wizard mode will appear on the screen.
- c. Select the **“custom copy”** option to choose the photos you wish to download from the camera to your PC.

Or you can select **“Express”** option to download all photos to the computer without the option of selecting photos. In this mode you will not see a preview of the photos transferred.

Custom copy

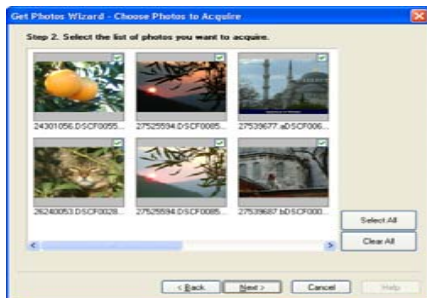


This mode is used to manually select the photos you wish to copy to your computer.

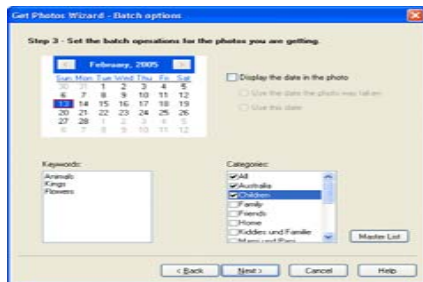
The **“Device selection”** mode will appear. Both your camera and the memory card will each appear in the **“Active Devices”** list.

Select the **“Custom copy”** radial button option and then click **“Next”** to continue.

Note: At this stage you can select the **“Express”** option to copy all photos to your computer at once without any prompt.



Select your photos click **"Next"** to continue.



Add active captions to the picture. With this feature you can add a date, keywords and categories. Click **"Next"** to continue.

Everything you need to get the most from your photos

Select photos - Select the photos that you download from your camera to edit them using the software.

Edit photos - Click the **"Enhance photos"**, **"Add captions"** from the main window to edit any of your photos.

Share photos - Share your photos via **"E-mail"**, **"Printing"**, and **"Create HTML web"** to upload online.

Workshop - Create **"Calendars"**, two sides **"Greeting cards"** and **"Postcards"** on standard photo paper. You can purchase **"Album"** and **"Video CD"**.



These are two additional workshop project that can be downloaded online at any time and create Photo Album and slide shows on CD that can be viewed on your PC and VCD for viewing on your TV using your DVD player.

How to purchase additional "Workshop" projects

In addition to the free Calendars, two-sided Greeting Cards and Postcards Workshop projects you have the ability to purchase two additional Workshop projects: "Albums" and "Video CD" online, at anytime.

1. To purchase the “Workshop Project” simply click the one you wish to purchase and you will be referred to an online website where you can purchase them.
2. Once you purchase the “Workshop projects” they will be automatically activated in the software.

PhoTags Express software owner manual

You can edit, print and share photos with PhoTags Express.

Select the “Show Me How” button to view an overview of what can be done and how to use PhoTags Express:

1. Launch the PhoTags Express.
2. Click the “**Tour**” button on the main window to view how to use the PhoTags Express in detail.



Viewing Videos on Your Computer

To view a video clip double click on a video file, this will open Windows Media Player.

Maintenance of Your Digital Camera

The digital camera is a delicate device. Please handle your camera with care to avoid damaging it.

Sakar Warranty Card

This warranty covers for the original consumer purchaser only and is not transferable. Products that fail to function properly UNDER NORMAL USAGE, due to defects in material or workmanship. Your product will be repaired at no charge for parts or labor for a period of one year.

What Is Not Covered By Warranty:

Damages or malfunctions not resulting from defects in material or workmanship and damages or malfunctions from other than normal use, including but limited to, repair by unauthorized parties, tampering, modification or accident.

What To Do When Service Is Required:

When returning your defective product (postage pre-paid) for service, your package should include:

1. Copy of **original** bill of sale
2. A detailed written description of the problem.
3. Your return address and telephone number (Daytime)

MAIL TO ADDRESS BELOW:

Sakar International

Attention: Service Department

195 Carter Drive

Edison, NJ 08817

You may also visit www.sakar.com for further assistance if necessary or call our tech support department toll free at (877) 397-8200

Appendix A: Specifications

Product type	DSC/ Mass Storage multi-function digital camera
Sensor	CMOS Sensor
Image resolution	DSC: 2304x1728 (4.1M)pixels; 2048X1536 (3M) pixels; 640x480 (VGA) pixels
Lens	F=9.3mm, F2.8
External memory	SD/MMC card
Storage capacity	<p>Internal memory:</p> <p>You can only take 2 test photos for buffer if without SD memory card.</p> <p>AVI: about 20 seconds</p> <p>External SD memory card (256MB)</p> <p>Standard quality: about 2304x1728(4.1M) 603pcs; 2048x1536(3M) 958pcs; 640x480 (VGA) 2612pcs.</p> <p>Note: the total number of images you take is according to the different environment and memory card capacity.</p>
Flash	force on/off
Self-timer	10S
Power saving	60S
Battery	3*AAA batteries (4.5V)
Transmission interface	USB V1.1
Working temperature	0~40℃
Computer system	Window XP/2000/Vista/ Mac OS X (10.2.6 or higher)

Appendix B: Troubleshooting

Q: I have taken photos but my computer does not recognize my camera. What do I do?

A:

First, ensure that you have in fact taken photos. Press the Shutter/OK button a few times to take some sample photos and then try downloading them again.

It is also recommended that you have an SD card inserted in the camera.

Secondly, always use the USB cable that came together in the package with the camera.

The USB cable needs to be inserted in a free USB slot on your computer.

Thirdly, give your computer time to recognize that the device is inserted. If need be, refresh the device options list until you see the removable device appearing.

If the computer does not recognize your device it may mean that your computer does not meet the minimum system requirements.

Please see the System Requirements section of this manual. If your computer does not matches these requirements then it is possible that you will not be able to transfer the photos and videos from your camera.

This device complies with the part 15 of the FCC rules. Operation is subject to the following two conditions:(1) this device may not cause harmful interference, and (2) this device must accept any interference received, including interference that may cause undesired operation.

Caution: changes or modifications not expressly approved by the party responsible for compliance could void the user's authority to operate the equipment.

NOTE: This equipment has been tested and found to comply with the limits for a Class B digital device, pursuant to Part 15 of the FCC Rules, These limits are designed to provide reasonable protection against harmful interference in a residential installation. This equipment generates. Uses and can radiate radio frequency energy and, if not installed and used in accordance with instructions. May cause harmful interference to radio or -television reception, which can be determined by turning the equipment off and on, the user is encouraged to try to correct the interference by one or more of the following measures:

- ___ Reorient or relocate the receiving antenna.
- ___ Increase the separation between the equipment and receiver.
- ___ Connect the equipment into an outlet on a circuit different from that to which the receiver is connected.
- ___ Consult the dealer or experienced radio/ TV technician for help.

A03-080612