

USB V.90 56K Fax Modem

User Manual

FCC REGULATORY STATEMENTS

The United States Federal Communication Commission (FCC) and the Canadian Department of Communications have established certain rules governing the use of modems and other electronic equipment.

FCC Part 68 Registration

This high speed USB 56K FAX MODEM complies with FCC Part 68 rules, and the use of this modem is subject to the following restrictions:

1. The FCC has established rules which permit this device to be directly connected to the telephone network. Standardized jacks are used for these connections. This equipment should not be used on party lines or coin phones.
2. If this device is malfunctioning, it may also be causing harm to the telephone network; this device should be disconnected until the source of the problem can be determined and until repair has been made. If this is not done, the telephone company may temporarily disconnect service.
3. The telephone company may make changes in its facilities, equipment, operation and procedures; if such changes affect the compatibility or use of this device, the telephone company is required to give adequate notice of the situation with the FCC.
4. If the telephone company requests information on what equipment is connected to their lines, inform them of:
 - a. The telephone number to which this unit is connected.
 - b. The Ringer Equivalence Number (REN).
 - c. The USOC jack required.
 - d. The FCC Registration number.

Items (b) and (d) are indicated on the label. The Ringer Equivalence Number (REN) is used to determine how many devices can be connected to your telephone line. In most areas, the sum of the REN's of all the devices on any one line should not exceed 5.0. If too many devices are attached, they may not ring properly.

FCC Part 15 Registration

This device complies with Part 15 of FCC rules. Operation is subject to the following two conditions:

- 1) This device may not cause harmful interface, and
- 2) This device must accept any interface received, including interface that may cause undesired operation.

This equipment has been tested and found to comply with the limits for a Class B digital device, pursuant to Part 15 of the FCC Rules. These limits are designed to provide reasonable protection against harmful interference in a residential installation. This equipment generates, uses and can radiate radio frequency energy, and if not installed and used in accordance with the instructions, may cause harmful interference to radio communications. However, there is no guarantee that interference will not occur in a particular installation. If this equipment does cause harmful interference to radio or television reception, which can be determined by turning off and on, the user is encouraged to try to correct the interference by one or more of the following measures:

- (1) Reorient or relocate the receiving antenna.
 - (a) Increase the distance between the equipment and receiver
 - (b) Connect the equipment into an outlet on a circuit different from that to which the receiver is connected.
- (2) Consult an experienced radio/TV technician for help.

CTR 21 pan-European Certification

This equipment has been approved in accordance with Council Decision 98/482/EC for pan-European single terminal connection to the public switched telephone network (PSTN). However, due to differences between the individual PSTNs provided in different countries, the approval does not, of itself, give an unconditional assurance of successful operation on every PSTN network termination point. In the event of problems, you should contact your equipment supplier in the first instance.

This device is designed to work with the notified networks in all EC member states. Nevertheless, some of the network services in individual countries might not be supported, but they will not affect the normal data and fax applications. For example, the metering charge service in Germany. Besides you may encounter difficulty of using PULSE dialing function in some of the countries, such as Nordic countries. This kind of network compatibility is dependent on the physical and software settings of this device. If the users are desired to use this device on those networks, they should contact the vendor or supplier first.

Table of Contents

INTRODUCTION	1
SPECIFICATIONS	1
MODEM	1
FAX	1
USB	1
SYSTEM REQUIREMENTS	1
PARTS NAMES AND FUNCTIONS.....	2
HARDWARE INSTALLATION	3
SOFTWARE INSTALLATION.....	4
INSTALLATION FOR WINDOWS 98.....	4
INSTALLATION FOR WINDOWS 2000.....	5
<i>Setup Diagnostics</i>	8
INSTALLATION FOR WINDOWS XP.....	9
UNINSTALL.....	12
UNINSTALL FOR WINDOWS 98.....	12
UNINSTALL FOR WINDOWS 2000.....	12
UNINSTALL FOR WINDOWS XP.....	15

Introduction

The USB V.90 Fax Modem complies with the Universal Serial Bus functionality built in Windows 98/2000/XP. It is compatible with Bell, ITU-T (formerly CCITT) and Hayes AT commands. With this USB V.90 Fax Modem, you can enjoy all the benefit offered by USB technology and get a faster and easier Internet access.

Specifications

Modem

V.90, K56flex 56Kbps, V.34+ 33.6Kbps, V.32b /
V.32 / V.22bis / V.22 / V.23 / V.21

Error correction: V.42 and MNP3.4

Data compression: V.42bis and MNP5

AT command set

Fax

G3, V.17/ V.29/ V.27 14.4K bps,

Fax Service Class 1/ 2/ 2.0 compliant

USB

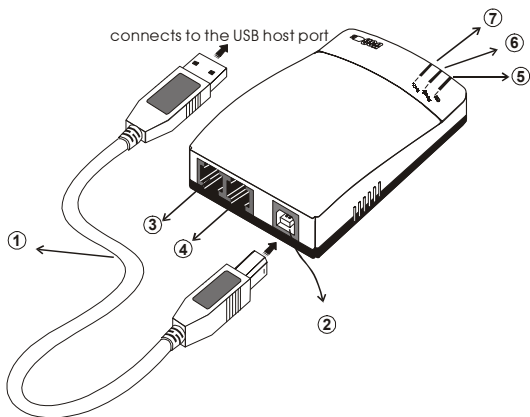
1.1 compliant, power management bus-powered,
suspend mode supported, full speed 12 Mbps.

System Requirements

- A Pentium® processor-based personal computer
166 MMX or above
- At least 16 MB of RAM
- An USB port
- Microsoft Windows 98/2000/XP
- A CD-ROM drive

Parts Names and Functions

- ① **USB connection cable:** connects the USB host port to the USB V.90 Fax Modem
- ② **USB-B:** USB device port
- ③ **LINE** jack: connects to the phone line
- ④ **Phone** jack: connects to the telephone set
- ⑤ **OH** LED indicator: glows when it is in on-line status
- ⑥ **Ready** LED indicator: glows when the device is well installed
- ⑦ **Rx/Tx** LED indicator: blinks when the USB V.90 Fax Modem is transmitting/receiving data



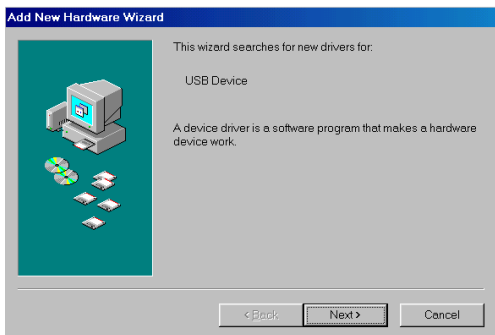
Hardware Installation

1. Locate the USB host port of your system. Connect one end of the USB connection cable to your USB host port.
2. Connect the other end of the USB connection cable to the device port (**USB B**) of the USB V.90 Fax Modem until it clicks.
3. Connect your phone line to the **LINE** jack.

Software Installation

Installation for Windows 98

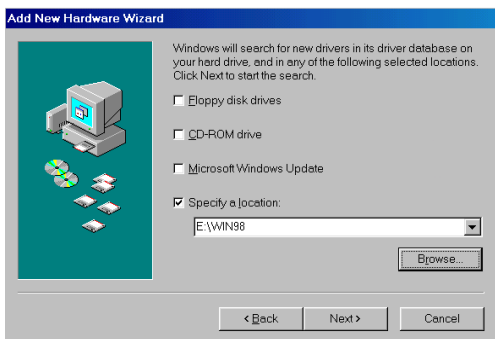
1. When the USB V.90 Fax Modem is well connected to your computer, Windows 98 will automatically detect the new device and ask for the necessary driver software. Click **Next** to proceed.



2. Select **Search for the best driver for your device (Recommended)** and click **Next** to continue.



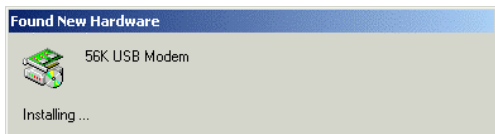
3. Insert the installation disk or CD into the chosen drive (a floppy drive or a CD-ROM drive) and select **Specify a location**. Click **Browse** to select the location where you load the device driver. Click **Next** to start the search.



4. Click **Next** to continue when the suitable driver for the device is selected.
5. Follow on-screen instruction to complete installation. Click **Finish**.
6. When the software installation is complete, click **Yes** to reboot the system to activate the new device.

Installation for Windows 2000

1. When the USB V.90 Fax Modem is well connected to your computer, Windows 2000 will automatically detect the new device and ask for the necessary driver software. Click **Next** to proceed.

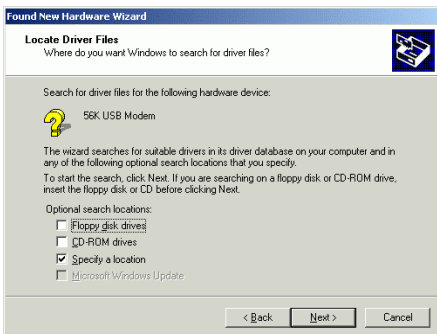




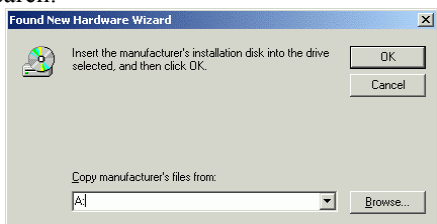
2. Select **Search for a suitable driver for my device (recommended)** and click **Next** to continue.



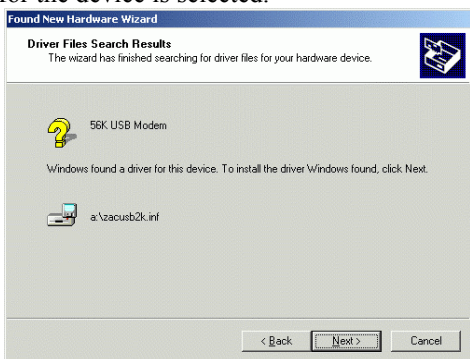
3. Insert the installation disk or CD into the chosen drive (a floppy drive or a CD-ROM drive). Select **Specify a location** and click **Next** to continue.



4. Click **Browse** to select the location where you load the device driver. Click **OK** to start the search.



5. Click **Next** to continue when the suitable driver for the device is selected.



6. Click **Yes** in the **Digital Signature Not Found** window to continue.



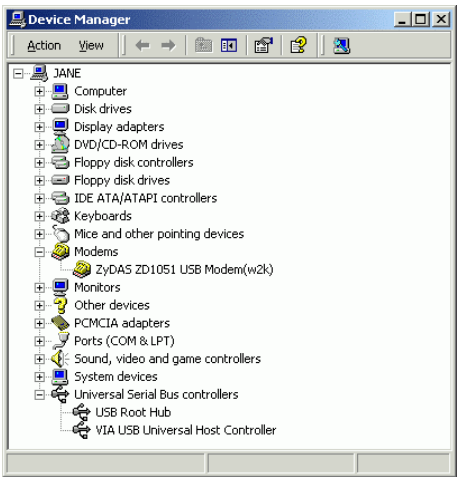
7. Click **Finish** to complete installation.



Setup Diagnostics

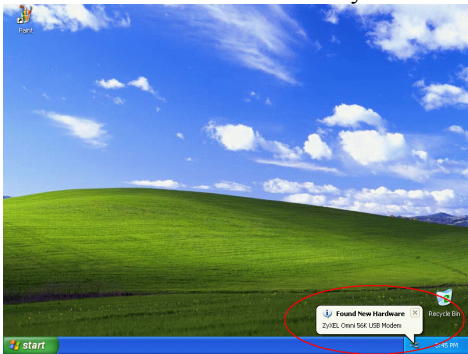
To verify whether your USB V.90 Fax Modem exists in your computer and is workable, go to **My Computer→Control Panel→System**. At the **System Properties** dialog box, select **Hardware** and click **Device Manager**. If the **USB V.90 FAX MODEM** and **Network adapters** are found, it

means that your Network device is well installed. If not, consult your computer dealer for the further technical supports.



Installation for Windows XP

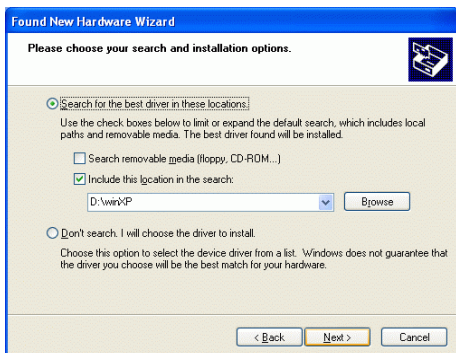
1. When the USB V.90 Fax Modem is connected to your computer, Windows XP will automatically detect the new device and install your hardware.



2. When the necessary hardware driver is not found, Windows XP will prompt you to select the device driver in the **Found New Hardware Wizard** windows. Select **Install from a list or specific location (Advanced)** and click **Next** to continue.



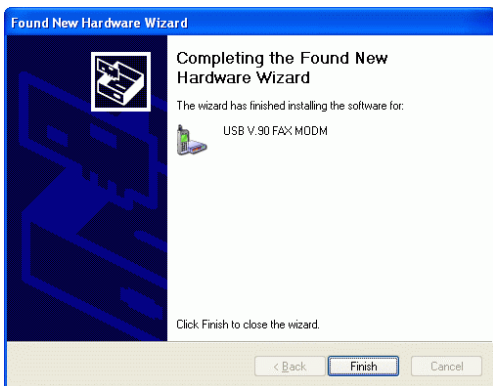
3. Insert the installation disk or CD into the chosen drive (a floppy drive or a CD-ROM drive) and select **Include this location in the search**. Click **Browse** to select the location where you load the device driver. Click **Next** to start the search.



- Click **Continue Anyway** in the **Hardware Installation** window to continue.



- Expect a minor delay for Windows to search for the appropriate driver for the device.
- Click **Finish** to complete installation.



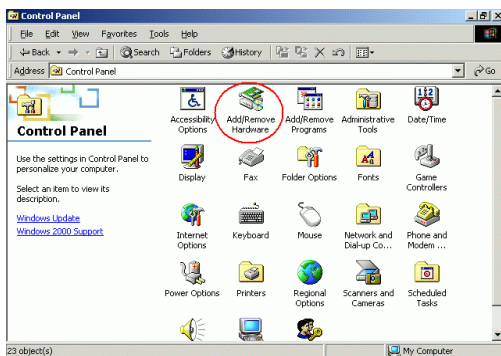
Uninstall

Uninstall for Windows 98

1. Go to **My Computer**→**Control Panel**. Double click **System** icon.
2. Select **View device by type** at the **Device Manager** dialog box. Double click the **USB V.90 FAX MODEM** icon. Press **Remove** to uninstall the device. Click **OK** to confirm Device Removal. This device will be removed automatically.

Uninstall for Windows 2000

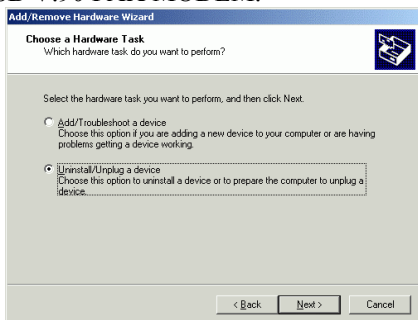
1. Go to **My Computer**→**Control Panel**. Double-click **Add/Remove Hardware** icon.



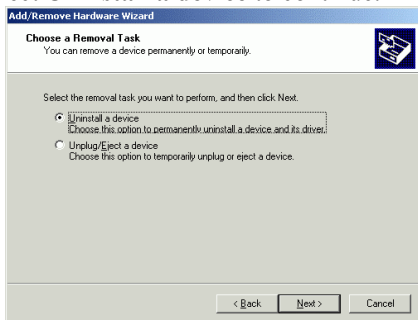
2. Click **Next** to proceed.



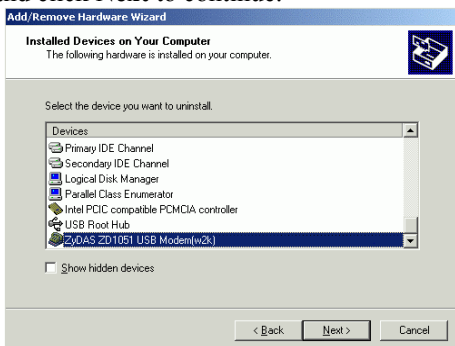
3. Select **Uninstall/Unplug a device** to uninstall USB V.90 FAX MODEM.



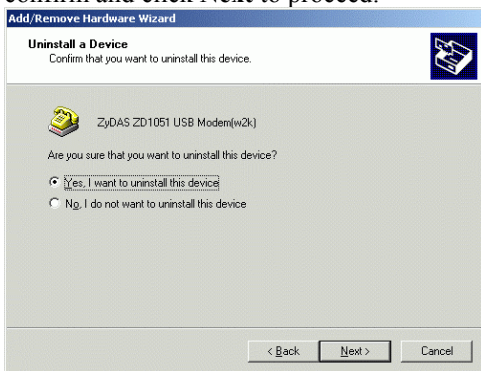
4. Select **Uninstall a device** to continue.



5. Windows will prompt you to choose the hardware to uninstall, choose the **USB Modem** and click **Next** to continue.



6. Select **Yes, I want to uninstall this device** to confirm and click **Next** to proceed.

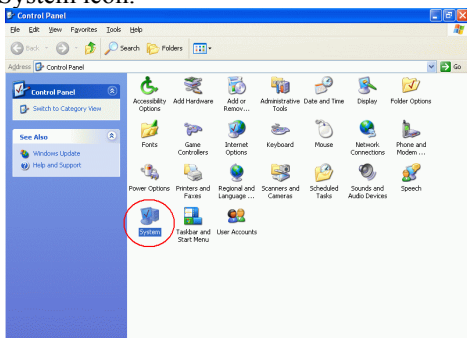


7. Click **Finish** to complete the hardware's removal.

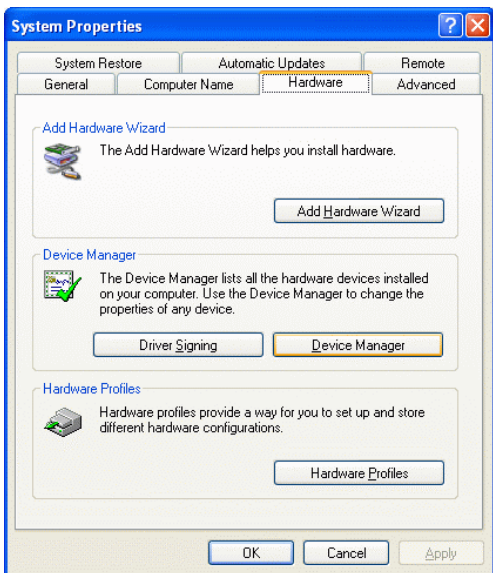


Uninstall for Windows XP

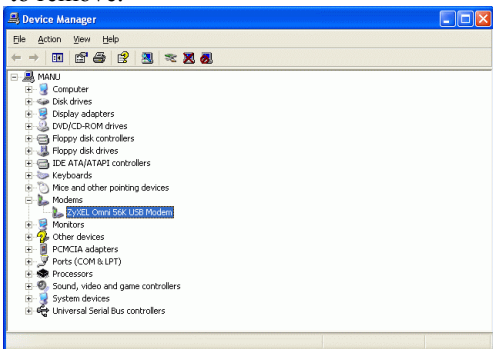
1. Go to **Start→Control Panel**. Double click **System** icon.



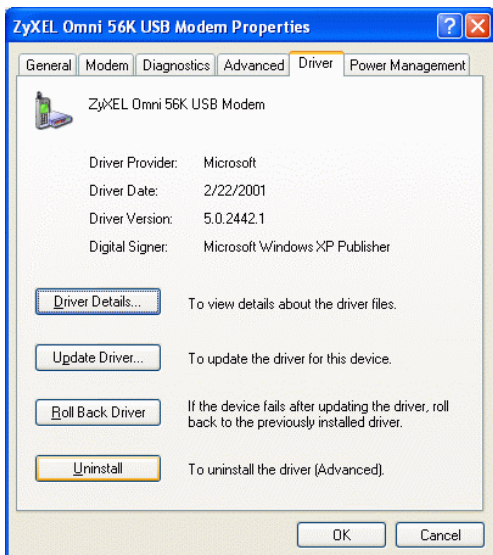
2. At the **System Properties** dialog box, Choose **Hardware** to click **Device Manager** button to continue.



3. At the Device Manager dialog box, Select **Modems** and click the **USB Modem** you want to remove.



4. At the **USB Modem Properties** window, click **Uninstall** to continue.



5. Click **OK** to complete the USB Modem's removal.

