

Chapter 1 Introduction of TVGo DVB-T02Q

1.1 Introduction

The TVGo DVB-T02Q can turn your notebook or desktop PC into a personal digital TV and let you watch high definition free-to-air DVB-T TV on your notebook or desktop PC. The compact size design makes it easy for you to take it anywhere and real-time record the TV programs to DVD disc in DVD format. With the remote controller, you can easily to watch TV and record, also playback high quality digital video programs on your NB or PC and channel preview. These functions supported by TVGo DVB-T02Q make this a product you don't want to miss.

1.2 Package contents:

- TVGo DVB-T02Q x 1
- Remote Controller (includes battery) x 1
- Portable Digital Terrestrial TV Antenna x 1
- Software Disc x 1
- Quick Installation Guide x 1
- Switching Head x 2 (IEC Type*1 and MMXC Type*1)

Notice: We highly recommend you use the outdoor antenna for better signal reception



TVGo DVB-T02Q



Switching Head



Remote Controller with Battery



Software Disc



Quick Installation Guide



Antenna

1.3 Features of TVGo DVB-T02Q

- Watch worldwide free-to-air digital **HDTV** and SDTV TV programs and free-to air digital radio
- Powered by **USB2.0** cable (compatible with USB1.1)
- Supports time-shifting functions to avoid missing any TV programs
- Supports real-time recording and schedule recording to hard disk
- Supports real-time recording to DVD disc in DVD format (For using this function, you need a DVD writer on your PC or NB)
- Supports snapshot function that lets you capture your favorite images from programs and turn it into wallpaper for your PC or NB
- Supports EPG (Electronic Guide program) and Teletext function

1.4. Minimum system requirements:

SDTV

- PIII 1.7 GHz or above for watching SDTV TV program
- P4 2.4 GHz or above for watching SDTV TV program and recording

HDTV

- P4 2.4 GHz or above for watching HDTV TV program
- P4 3.0 GHz or above for watching HDTV TV program and recording
- 256MB system memory size
- Microsoft Windows 2000 SP4, or Windows XP SP1/SP2 operating system
- Microsoft DirectX version should be 9.0c or later
- 100MB available hard disk space (used by the driver and software),
- 3GB disk space per hour needed for TV program recording

Chapter 2 Installation

You can install the TVGo DVB-T02Q easily after reading this chapter. The following sections will provide you detailed information how to install the TVGo DVB-T02Q to your PC or NB.

2.1 Brief introduction on hardware installation

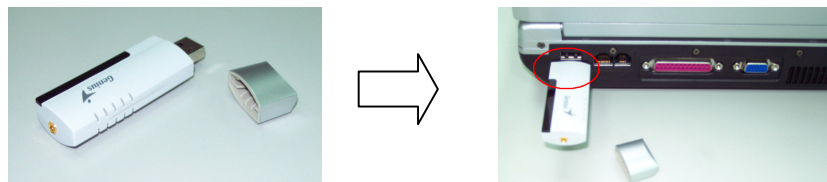


1. USB Interface: USB port used to connect TV pen driver and PC / NB

2. Antenna RF-In: Connect to Terrestrial antenna

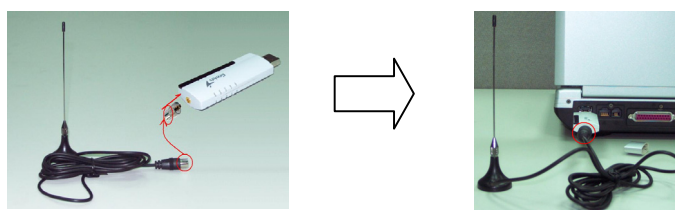
Step 1. USB connection

- Connect the USB port and the TVGo DVB-T02Q as shown below.



Step 2. Connect the antenna signal line

- First connect the TV antenna signal line to the IEC-MMXC switch head. Second, connect the IEC-MMXC switch head to TVGo DVB-T02Q RF-IN as shown below.



*Notice: 1. When the hardware is connected, you can start the software installation.
2. We highly recommend you use an outdoor antenna for better reception*

2.2 Software installation

The TVGo DVB-T02Q installation includes the application and driver; just follow the sections below to install the software.

1. After the computer and TVGo DVB-T02Q are connected, the following window appears. Click on "**cancel**" to install the driver later.



2. Please put into the software disc into your CD-ROM drive. The following window will pop up automatically.

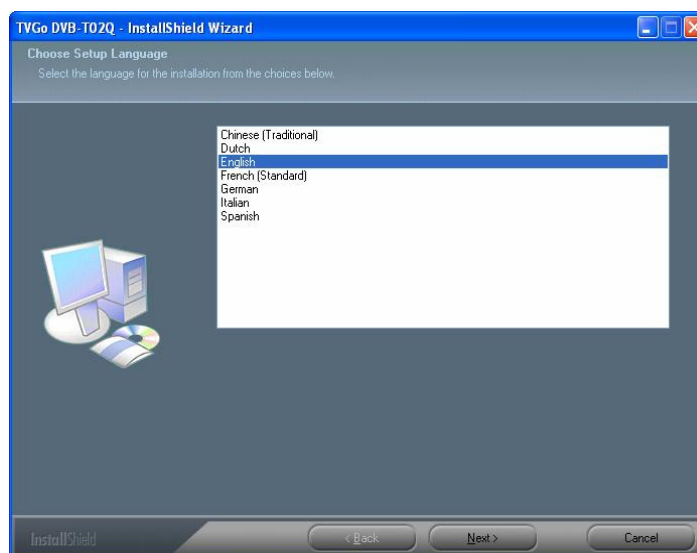


If you do not see this window above, please manually run “setup.exe ” from the software disc.

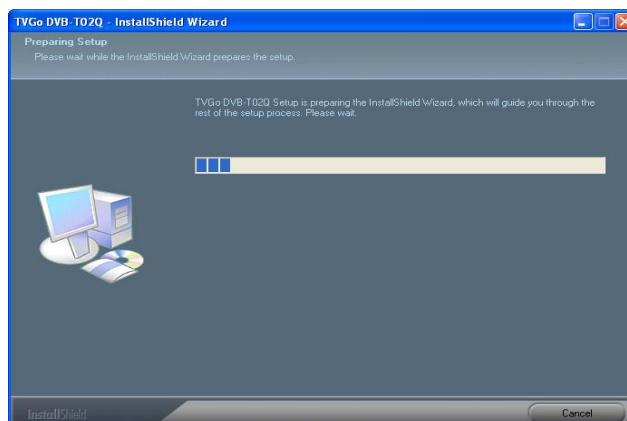
3. After entering WINDOWS, select “**Driver Setup**” to install driver and application. Then the following window will pop up.



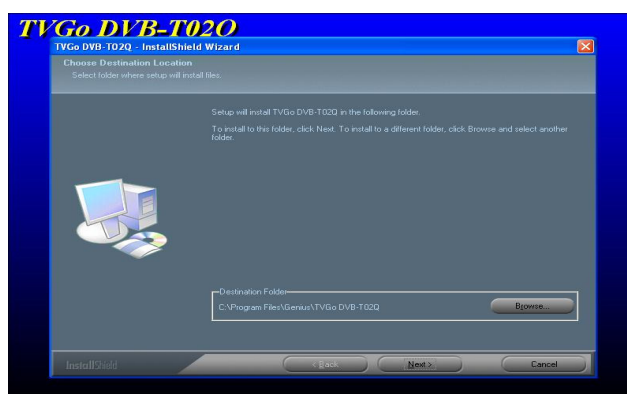
4. After entering InstallShield menu, please choose the languages installed, then continue installing according to the instructions.



5. The installation procedure will copy the driver and application software to your PC or NB. You can choose “**Cancel**” to stop the installation procedure.



6. Please select **“Next”** to continue installing and choose the desired file folder to install and go to next step.



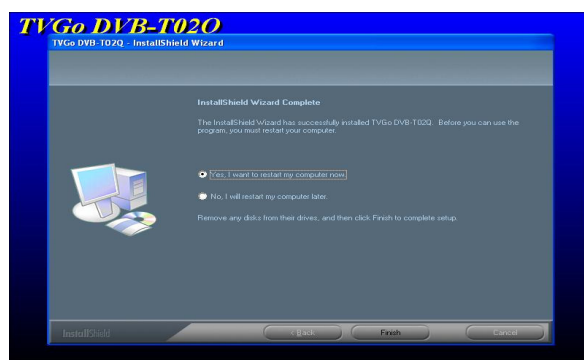
7. Please choose “Next” to continue installing according to the instruction, or “Back” to return to the last step and choose the suitable file folder to install. Or choose “Cancel”, to stop the installation.



8. The installation procedure is copying the driver to your PC or NB. You can choose “Cancel” to stop the installation procedure.



9. After the installation is done, click on **“Yes, I want to restart my computer now.”**, Then click and select **“Finish”** to complete the installation procedure.



10. The installation disc also contains Direct X 9.0c package. In order to use TVGo DVB-T02Q, you must install Direct X 9.0c or later version. The InstallShield will enter the DirectX 9.0c installation procedure automatically.

Chapter 3 Introduction of the software

It offers the strong and exhaustive function for one high-level digital TV player. Through it, you can enjoy exciting high-resolution, high-quality video and audio TV play back.

3.1 Control panel



Control Panel without Numerical Keypad

Control Panel with Numerical Keypad

Icon	Function description
	Close the TV player
	Full screen / normal screen switch
	Minimize the TVGo DVB-T02Q player
	Show the information of the TVGo DVB-T02Q player
	Fast forward the playback movie
	Fast backward the playback movie
	Stop the playback movie
	Pause the playback movie
	Play the previous television channel
	Record the TV program
	Choose the movie file to play
	Switch the TV channel up
	On-line help
	Switch the TV channel down
	Increase volume level
	Decrease volume level
	Volume level status display and adjustment
	Open EPG (Electronic Program Guide) of TV program
	Open or close the sound
	Watch the TV program
	TVGo DVB-T02Q player system setting
	Channel preview of TV program
	Start-up timeshift
	Capture a picture of the movie
	Establish the schedule of TV recording
	Switch between bilingual
	Turn on the numerical keypad
	Shut off the numerical keypad
	Choose the television channel
	Open teletext window of TV program
	Play the previous television channel
	Status display of intensity of the terrestrial TV signal
	Mute status display
	Stereo status display

3.2 Brief introduction of basic function

Intensity index of free-to-air terrestrial TV signal

This will show the status display strength of your television channel signal automatically.





18 : 00 : 59

Clock: The clock will show the time of your computer automatically

CH13-CTS_IQ

Channel name: The channel names broadcast at present time is shown automatically

Toggle for audio mute function

You can click icon  to turn the mute on or off. This icon represents mute -  .



Live TV recording: Record the TV program you are watching now.

Be careful! You can record to DVD disc directly if you have a DVD writer. Please check the Q&A for the list of the DVD writer support.



Schedule TV recording: Set the TV recording schedule.



System configuration: Scan TV channel, change video attribute, or set the file path of recording and capturing.



Bilingual support : If the TV program supports bilingual , you can click the icon on the control panel.

Note: This function depends on whether the TV program offers bilingual programming.



Frame capture: Capture a picture from the video playback or a live TV program .



Electronic Program Guide

Note: It depends on whether the TV channel offers this function or not.



Timeshift : You can use this function if you are interrupted while you are watching TV, you can reverse the TV to the point where you were interrupted .

Teletext

Note: This depends on whether the TV channel offers this information or not.



You can click **PageUp** or **PageDown** to go up or down one page. Just click **Pause** to hold the current page. You can also click **Home** to jump to page 100 or fill the page number into **GoTo** field to select page.

3.3 The multi-functional remote controller



ICON	Explanation
POWER	Start / close the TV
SLEEP	Set the player dormancy start time
TIME-SHIFT	Start-up time-shift
REC	Record the TV program
...	Choose the television channel
VOL	Increase/Decrease the volume level
CH	Switch up/down the TV channel
SIZE	Full screen / normal screen switch
RET	Play the previous television channel
MUTE	Open or close the sound
FWD	Fast forward the playback movie
PLAY/PAUSE	Play/Pause the playback movie
REV	Fast backward the playback movie

3.4 Functions supported by mouse

Click the right button of the mouse and you will see the following menu pop up.

Function	Function description
Channel up	TV channel up
Channel down	TV channel down
Channel return	Play the previous TV channel
Play	Choose the movie file to play
Stop	Stop the playback movie
Pause	Pause the playback movie
Forward	Fast forward the playback movie
Backward	Fast backward the playback movie
Recording	Record TV programs
Time-shift	Start-up time-shift
Mute	Open or close the sound
Zoom	Full screen / normal screen switch
About	Show the information of the TVGo DVB-T02Q player
Exit	Close the TV player


3.5 Hot keys function table

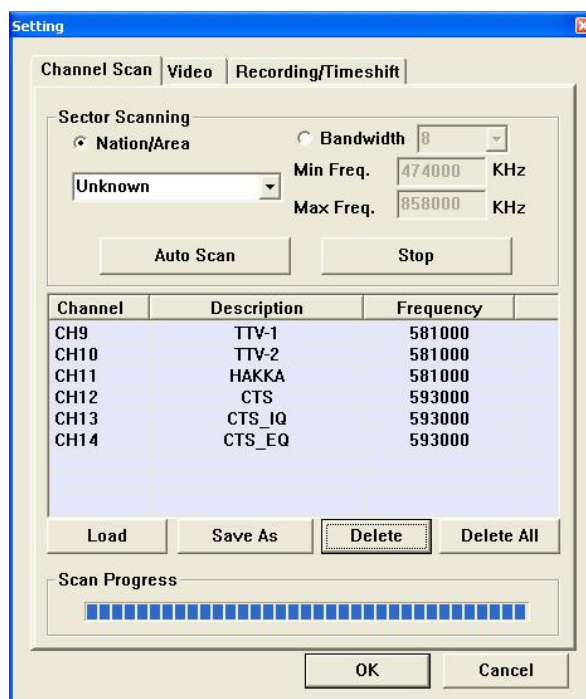
After TVGo DVB-T02Q Player is working, you can also use the following keys.

Function	Fast key
Close the TV player	ALT + P
Play recorded movie	ALT + S
Stop movie playing	ALT + S
Fast forward	ALT + F
Fast backward	ALT + B
Pause	ALT + S
Video recording	ALT + R
Stop recording	ALT + S
Capture picture	ALT + C
Time-shift	ALT + T
Full screen	ALT + X
Normal screen	ALT + X
Increase volume level	ALT + V
Decrease volume level	ALT + L
Mute	ALT + M
Up channel	ALT + U
Down channel	ALT + D
Channel selection	XX (X:1234567890)
Previous channel	ALT + J
On-line help	F1

Chapter 4 System Configuration

You can use some of the same settings when watching and recording TV. The sections in this chapter are based on their priority.

Please select and click the pattern -  on the control panel to enter the configuration page.



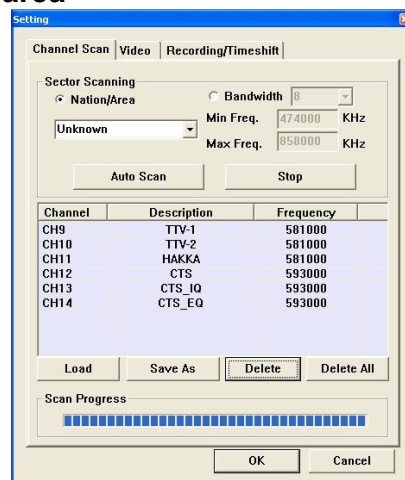
4.1 Channel Scan

You can select and click "**Load**" to load the channel table, or select some specific channels and select "**Delete**" to delete these specific channels, or select and click "**Delete All**" to delete all channels. Then you can select "OK" to store all changes. Or you can select "Cancel" to give up all changes and exit.

Notice:

1. *The digital TV has a characteristic called cliff effect. If the receiving free-to-air terrestrial signal is bad, you will not see the video image at all. This is unlike analog TV, for analog TV you can still watch TV in unclear video image. If the signal in your area is bad, you need to have an external outdoor antenna. Please see the details on how to fix this issue from Q&A in chapter 6.*
2. *The free-to-air terrestrial signal coverage status and the TV program broadcasting status can be found at the web site WWW.DVB.ORG*

4.1.1 Scan channels by area

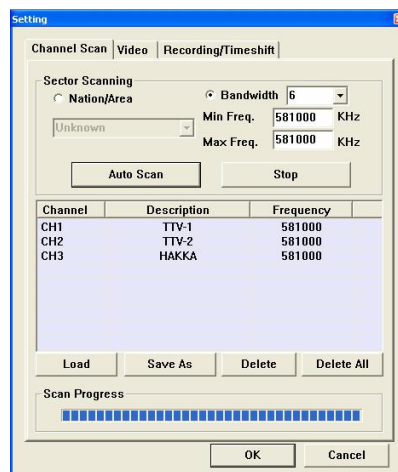


1. Please click and select "**Nation/Area**" under the "**Sector Scanning**" section.
2. Please choose your nation or area.
3. Please click and select the "**Auto Scan**".
4. After the channel scanning is finished, you can click and select "**OK**" to save and exit, or select "**Save As**" to store the new channel table and exit.

Note: If you are unable to scan any TV channels using your nation or area, please choose option item "6, 7, 8" under "Bandwidth" field and do the auto scan again.

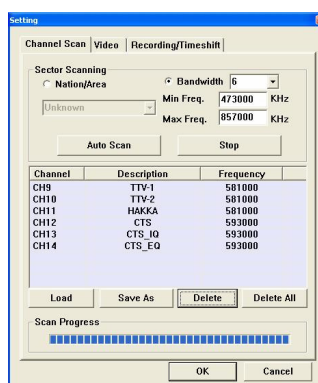
4.1.2 Scan channels by single frequency

1. Please click and select "**Bandwidth**".
2. You can select the bandwidth you want to scan. (" 6 ", or " 7 ", or " 8 ", or " 7, 8 ", or " 6, 7, 8 ")



3. Please fill in the desired frequency you want to scan under "**Min Freq.**" field.
4. Please fill in desired frequency you want to scan under "**Max Freq.**" field.
5. Please click and select "**Auto Scan**" to begin the channel scanning.
6. After the channel scanning is finished, you can click and select "**OK**" to save and exit, or select "**Save As**" to store the new channel table and exit.

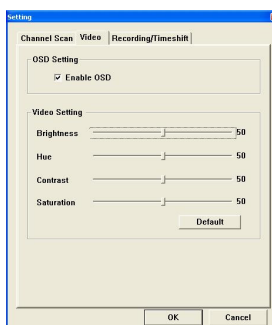
4.1.3 Scan channels by frequency range



1. Please click and select **"Bandwidth"**.
2. You can select the bandwidth you want to scan. ("6", or "7", or "8", or "7, 8", or "6, 7, 8")
3. Please fill in initial frequency you want to scan under **"Min Freq."** field.
4. Please fill in ending frequency you want to scan under **"Max Freq."** field.
5. Please click and select **"Auto Scan"** to begin the channel scanning.
6. After the channel scanning is finished, you can click and select **"OK"** to save and exit, or select **"Save As"** to store the new channel table and exit.

4.2 Adjusting Video

This configuration page has a lot of color parameters that you can adjust in accordance with your favor color style.



Enable OSD: By not canceling this function, the brief description of the function you choose will be shown in the TV video window.

Video Setting

Brightness: You can adjust the luminance of the image according to your taste.

Hue: You can adjust the tone of the image to your liking.

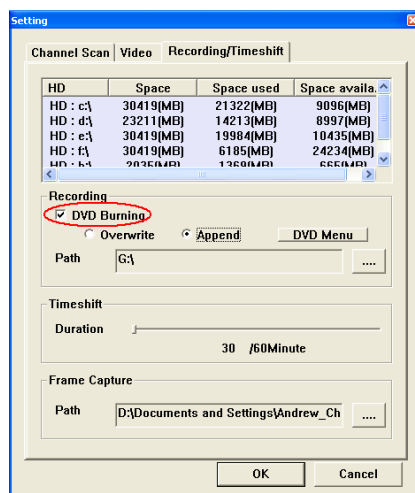
Contrast: You can adjust the contrast of the image.

Saturation: You can adjust the degree of saturation of the image.

Default: You can click this button to restore the default value stored on the system for "Brightness", "Hue", "Contrast" and "Saturation".

If the settings of video information are correct, you can click and select **"OK"** to save

4.3 Configuration for Record / Time shift



DVD Burning

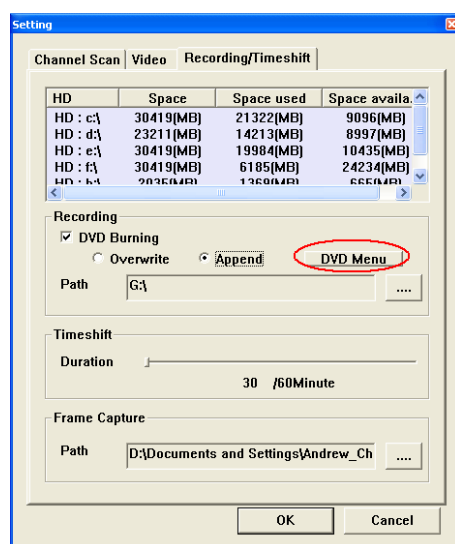
You can select this option to record the program into DVD disc directly. Please configure the following option fields after you select DVD burning.

Note: For using this function, you need a DVD writer on your PC or NB

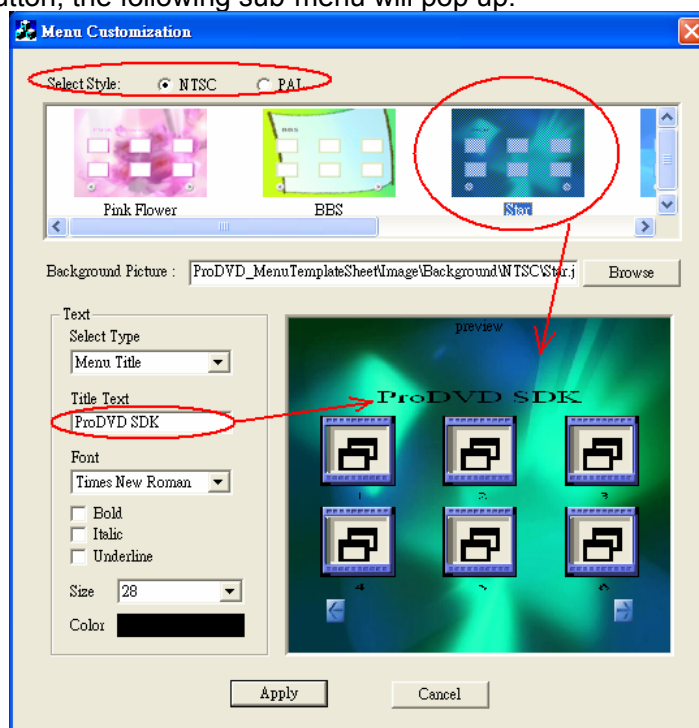
Path: You need to specify your DVD read/write drive in this field.

Overwrite: You can select this option to store the recording data over the original data.

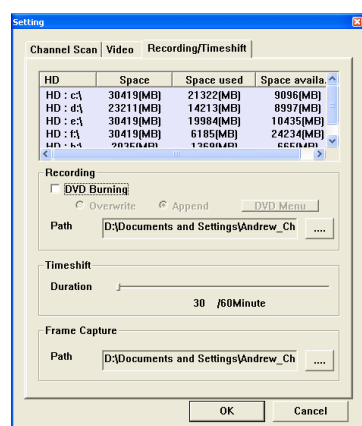
Append: You can select this option to append the recording data after the original data.



DVD Menu: You can configure the DVD menu style you like through the DVD Menu. After you click this button, the following sub-menu will pop up.



1. **Select Style:** You can choose between NTSC and PAL for recording video format.
2. **Background Picture:** You can choose background picture from template pictures or your own picture in bit map or JPEG format. The best picture resolution is 640x480.
3. **Select Type:** You can select between main video menu title and chapter pointer button title.
4. **Title Text:** You can type your DVD title text.
5. **Font:** Please select your favorite font type for DVD title. Also, you can choose Bold, Italic and Underline.
6. **Size:** You can set the size of DVD title text.
7. **Color:** You can choose color of DVD title text.



Recording Path

Please choose the data file path for the video recording into hard disk.

Timeshift Duration

The maximum period of "Time shift" you allow. You can choose from 30 to 60 minutes, and this field is restricted by the hard disk space on your system.


If you need to leave temporarily for some reason when watching a TV program, you can use this function to store the program at this moment and playback when you return.

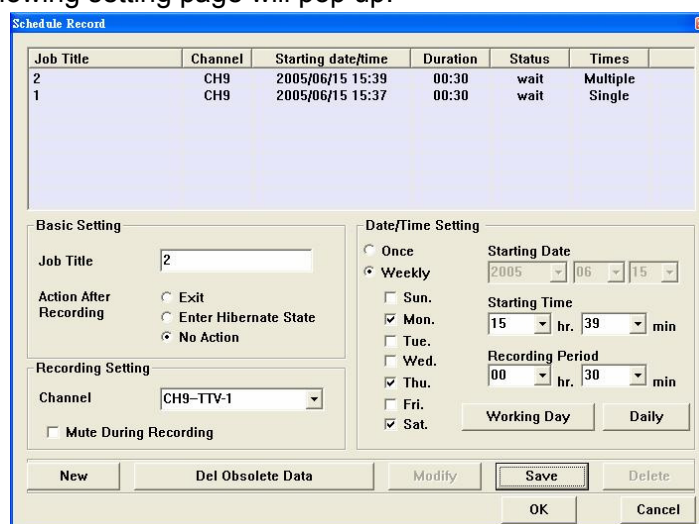
Frame Capture Path

Please choose the data file path for the frame capture.

4.4 Configuration of schedule recording

To configure the schedule recording, please select and click the icon on the control panel

– . The following setting page will pop up.



Job Title	Channel	Starting date/Time	Duration	Status	Times
2	CH9	2005/06/15 15:39	00:30	wait	Multiple
1	CH9	2005/06/15 15:37	00:30	wait	Single

Basic Setting

Job Title:

Action After Recording: ☐ Exit ☐ Enter Hibernate State ☒ No Action

Recording Setting

Channel:

☐ Mute During Recording

Date/Time Setting

☐ Once ☒ Weekly

Starting Date: 2005 / 06 / 15

Starting Time: 15 hr, 39 min

Recording Period: 00 hr, 30 min

☐ Sun. ☒ Mon. ☐ Tue. ☒ Wed. ☐ Thu. ☐ Fri. ☒ Sat.

Basic Setting

- **Job Title:** You can type in a name for the video recording
- **Action After / Recording:** There are three actions you can select after the schedule recording. Here are the options:
 - **Exit:** Click this and the application will exit after schedule recording.
 - **Enter Hibernate State:** Select this and the system will go into hibernation after the schedule recording.
 - **No Action:** Click this and the application will stay alive after the schedule recording.

Recording Setting

- **Channel:** You can type in the TV channel name for the schedule recording you want.
Note: You cannot record TV programs from different channels at the same time.
- **Mute Duration Recording:** Select this and the system will be mute during schedule recording.

Date / Time Setting

- **Starting Date:** You can choose to make an appointment to make video recording by filling in the starting date here.
Note: You cannot type in a date and time in the past.
- **Starting Time:** You can choose to make an appointment to make video recording by filling in the starting time here.
Note: You must type in a time, which is ahead more than one minute from the present time.
- **Recording Period:** You can type in the recording length here.

The screenshot shows the 'Schedule Record' dialog box. At the top, there is a table with columns: Job Title, Channel, Starting date/time, Duration, Status, and Times. The first row shows Job Title '1', Channel 'CH9', Starting date/time '2005/06/14 16:08', Duration '00:30', Status 'wait', and Times 'Single'. Below the table, there are two main sections: 'Basic Setting' and 'Date/Time Setting'. In 'Basic Setting', 'Job Title' is '1', 'Action After Recording' has 'No Action' selected, and 'Recording Setting' has 'Channel' set to 'CH9-TTV-1'. In 'Date/Time Setting', the 'Once' radio button is selected, 'Starting Date' is '2005/06/14', 'Starting Time' is '16:08', and 'Recording Period' is '00:30'. The 'Working Day' and 'Daily' buttons are also visible.

Once: Select this if you want to establish a video recording reservation just this time.

Weekly: Click on this to establish the video recording reservation the same time every week.

The screenshot shows the 'Schedule Record' dialog box. The table at the top now has two rows: Job Title '2' with Times 'Multiple' and Job Title '1' with Times 'Single'. In the 'Date/Time Setting' section, the 'Weekly' radio button is selected, and the 'Mon.' checkbox under the days list is checked. The 'Starting Date' is '2005/06/15', 'Starting Time' is '15:39', and 'Recording Period' is '00:30'. The 'Working Day' and 'Daily' buttons are also visible.

Working Day: Click this button to make a video recording reservation from Monday to Friday.

Daily: Click this button to make a video recording reservation each day.

New: Select this button to add a new video recording reservation.

Delete: Select this button to delete a pre-arranged schedule-recording job.

Del Obsolete Data: Click this button to delete all obsolete pre-arranged schedule recording jobs.

Modify: Select this button to modify a pre-arranged schedule-recording job.

Save: Click this button to save the newly added or modified job.

After you click **"Add"** button, you can set a new schedule-recording job. Once all the data is filled in correctly, you can click the **"Save"** button. The following window will pop up to show you the status of these jobs.

Job title: Displays the name of the schedule-recording job.

Channel: Displays the TV channel to be recorded in this schedule-recording job.

Starting date/time: Shows the starting date and time of this schedule-recording job.

Duration: The recording period of this schedule-recording job.

Status: The state (wait / finished) of this schedule-recording job.

Times : It displays how many times this schedule-recording job will take (Single/Multiple)

Job Title	Channel	Starting date/time	Duration	Status	Times
2	CH9	2005/06/15 15:39	00:30	wait	Multiple
1	CH9	2005/06/15 15:37	00:30	wait	Single

Basic Setting
 Job Title: 2
 Action After Recording: ☐ Exit ☐ Enter Hibernate State ☒ No Action

Recording Setting
 Channel: CH9-TTV-1
☐ Mute During Recording

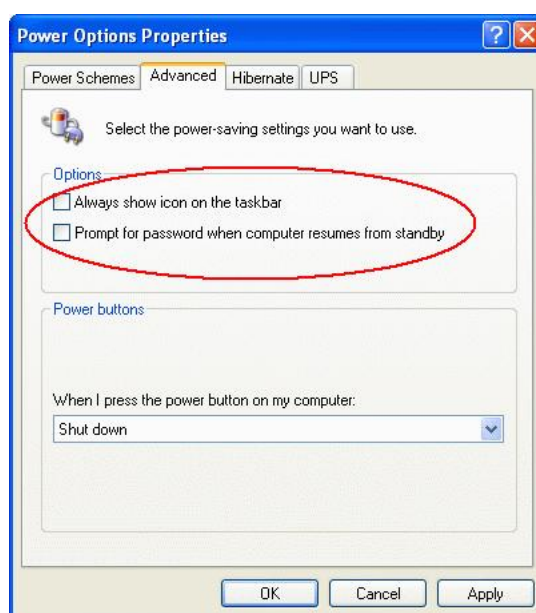
Date/Time Setting
☐ Once ☒ Weekly
 Starting Date: 2005-06-15
 Starting Time: 15:39
 Recording Period: 00 hr, 30 min
☒ Mon. ☐ Tue. ☐ Wed. ☐ Thu. ☐ Fri. ☒ Sat.

Buttons: New, Del Obsolete Data, Modify, Save, Delete, OK, Cancel

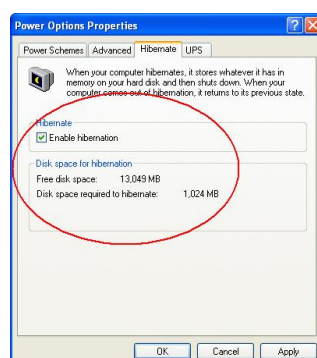
If the settings of all schedule-recording jobs are correct, you can click **"OK"** button to save all the changes and exit. Or click **"Cancel"** button to give up all the changes you made and exit.

Be careful! TVGo DVB-T02Q supports the wake up system from hibernation when the schedule recording time is up. The system can start recording the TV program according to the recording time you set. If you want to enable this function, please make sure the following items are done:

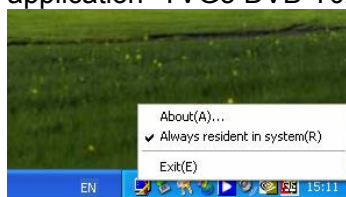
1. Please do not check the box of "Prompt for password when the computer resumes from standby" under the "Advanced" section from "Power Options Properties"



2. Please check the "Enable hibernation" box under the "Hibernate" section from "Power Options Properties"

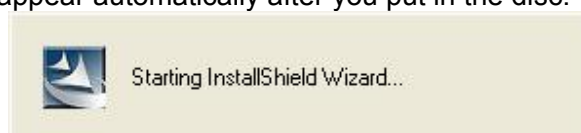


3. Please make sure that the application "TVGo DVB-T02Q Monitor" is running now.



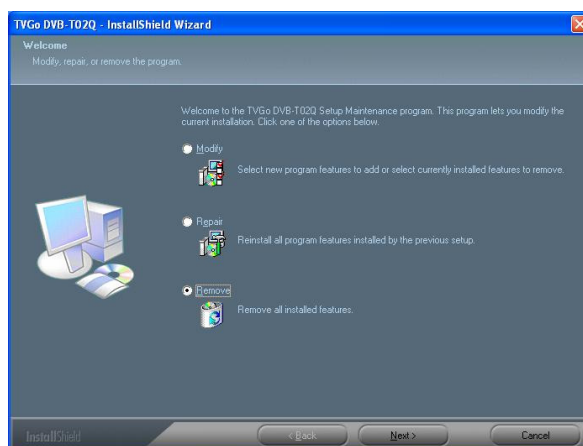
Chapter 5 Uninstall TVGo DVB-T02Q

1. Please put the software disc of TVGo DVB-T02Q into your CD-ROM drive. You will see this window appear automatically after you put in the disc.



If you do not see this window, please find " setup.exe " from driver.

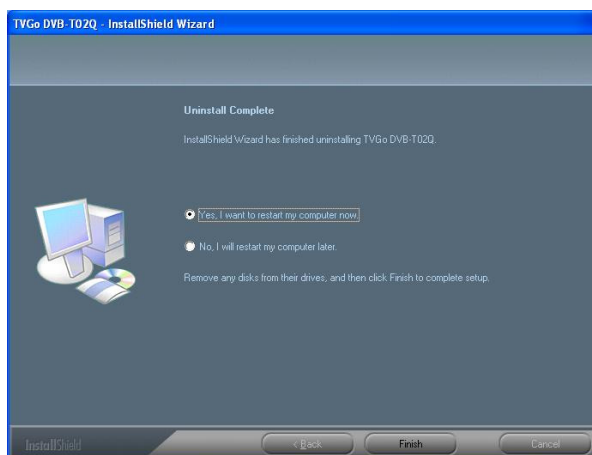
2. Click "Remove", the InstallShield will uninstall TVGo DVB-T02Q from your system.



3. Please select and click the button "Yes (Y)".



4. After the uninstallation is done, please select **"Yes, I want to restart my computer now."**, Then click "Finish" to complete the uninstallation procedure.



Chapter 6 Q&A

In this chapter, we list some questions that you might have during installation and using TVGo DVB-T02Q. Please look through these questions before you contact your retailer or us.

1. **If you use Windows XP SP1, please go to the following website to download the patch program for USB.**

<http://support.microsoft.com/kb/822603/>

2. **Windows is unable to find TVGo DVB-T02Q hardware.**

- a. Make sure the connection for TVGo DVB-T02Q and USB cable to the PC is correct.
- b. Wait for system to look for the hardware when you plug the TVGo DVB-T02Q into your system.
- c. Restart your computer.
- d. If there is still a problem, manually use the control panel to add/remove TVGo DVB-T02Q. This way you can make sure the installation is correct.
- e. Remove and insert the USB cable that connects TVGo DVB-T02Q and computer again. ***(The duration between the pullout and plug-in of TVGo DVB-T02Q should be at least 5 seconds.)***
- f. Please try to use another USB port.

3. **Windows is unable to install the driver of TVGo DVB-T02Q.**

- a. While installing the driver, please confirm TVGo DVB-T02Q installation disc is put correctly in your disc drive.
- b. While you manually install the driver, make sure the path to the driver files is correct.

4. **How do I Install the application software?**

You have two ways to start the installation procedure.

- a. Install the disc, the system will carry out the installation procedure automatically to install the software and driver.
- b. Install the Setup.exe in the disc manually.

5. There is no channel found after channel scanning.

- a. Make sure that you click the confirm button each time you make the channel scan.
- b. Confirm the correct installation of the TVGo DVB-T02Q and system.
- c. Check whether the connection between TVGo DVB-T02Q and the antenna is correct.

6. When I watch TV, the screen shows nothing or an error message.

- a. This could be because the signal is too weak in intensity, it is unable to display the TV program correctly. Please change the antenna location or use an external antenna.
- b. Check whether the line between TVGo DVB-T02Q and the antenna is correct.
- c. Make sure the VGA card driver is installed correctly.
- d. Please confirm the edition of your operating system is Windows 2000 (SP4) or Window XP (SP1/SP2)
- e. Please confirm that you have already installed Microsoft DirectX 9.0c

7. I can see the image, but cannot hear any sound.

- a. Make sure the hardware and driver of the sound card is correct on your computer.
- b. Check that the volume is not mute.

8. Why can't I start the application?

- a. Your system needs to have the sound card and driver installed.
Note: Whether you want to have sound or not, your sound card and driver must be installed correctly.
- b. Please check the TV station signal quality and intensity.

9. While I watch the TV program, the sound is normal, but the screen is black, why is this?

- a. Please make sure your display card driver and Microsoft DirectX 9.0c are installed correctly.

10. When I playback video files stored on the notebook computer, why it is always not smooth?

- a. Please check the power management on your notebook computer. This power management function will reduce the operation frequency of the CPU, so un-check the power saving box.

11. There is an error message on the screen that shows "hardware error! "

- a. The driver is not installed correctly. Install the driver again.

12. When watching TV, the video is not smooth when I am using the remote controller.

- a. Because USB has bandwidth restriction, when you are broadcasting the TV program and using the remote controller at the same time, the data transfer will be influenced and interrupted.

13. How can I find out the terrestrial TV signal coverage in the area I live?

- a. If you want to know whether you can watch free-to-air terrestrial digital TV in your location, you can go to the web site below to get the information.

<http://www.dvo.org.tw/e-wave/cts/search.asp>

(For other area than Taiwan, please check the web site accordingly.)

14. Why is the free-to-air terrestrial TV signal bad? How to solve it?

- a. There are a lot of reasons for this issue. For example, there is no broadcasting station in your residence area; there is a building or mountain that blocks the signal, etc. Check the web site of Digital Information Industry of the Economic department first. You can watch the information of the free-to-air terrestrial TV station in your location. Second, if the signal is blocked by a building or mountain, you need to consider using an external outdoor antenna for the antenna enclosed is a small-scale indoor reception antenna. It is an antenna considered by general environment. For special environment, and the fact that the signal is bad, you might need to use an external outdoor antenna. So we advise you to purchase an outdoor UHF (Ultra High Frequency) antenna so you can get better quality to receive the digital TV program.

15. Why won't the DVD burning work?

- a. This is an optional feature. Please make sure your purchase product includes this feature.
- b. To use this option, your system also needs to have extra CPU power (about 300MHz) compared with recording to hard disk.
- c. You also need to have a DVD read/write drive to support this feature. There are a lot of DVD read/write drives on the market that have compatibility issues. The following drives have been tested at this moment. Please check the following table for details.

DVD Burner Compatibility List	
<i>Manufacturer</i>	<i>Model</i>
Aopen	DUW1608
BenQ	DW1620, DW1640
IOMagic	DVDRW 1016IM
LG	GSA-4040B, GSA-4081B, GSA-4082B
	GWA-4040N
Liteon	LDW-400D, LDW-401S
NEC	ND-1000A, ND-1300A, ND-2100A, ND-2510A
Panasonic	LF-D521, LF-560D, LF-660/9572, SW-9571
	SW-9572, SW-9583
PHILIPS	DVDRW208, DVDRW228, DVDRW416
	DVDRW424
Pioneer	DVR-104, DVR-105, DVR-106, DVR-107
Plextor	PX-716A
Samsung	SR-W04B
SONY	DRU-110A, DRU-500A, DRU-510A
	DRU-530A, DRU-700A
Toshiba	SD-R5002, SD-R5112