

# LINKSYS®

A Division of Cisco Systems, Inc.



## 10/100/1000 Gigabit Network Adapter

## User Guide



Model No. **EG1064**



## Copyright and Trademarks

Specifications are subject to change without notice. Linksys is a registered trademark or trademark of Cisco Systems, Inc. and/or its affiliates in the U.S. and certain other countries. Copyright © 2003 Cisco Systems, Inc. All rights reserved. Other brands and product names are trademarks or registered trademarks of their respective holders.

## How to Use this Guide

Your guide to the Gigabit Network Adapter has been designed to make understanding networking with the Gigabit Network Adapter easier than ever. Look for the following items when reading this guide:



This checkmark means there is a Note of interest and is something you should pay special attention to while using the Gigabit Network Adapter.



This exclamation point means there is a Caution or warning and is something that could damage your property or the Gigabit Network Adapter.



This question mark provides you with a reminder about something you might need to do while using the Gigabit Network Adapter.

In addition to these symbols, there are definitions for technical terms that are presented like this:

***word: definition.***

Also, each figure (diagram, screenshot, or other image) is provided with a figure number and description, like this:

### **Figure 0-1: Sample Figure Description**

Figure numbers and descriptions can also be found in the “List of Figures” section in the “Table of Contents”.

# Table of Contents

Chapter 1: Introduction	1
Welcome	1
What's in this Guide?	1
Chapter 2: Getting to Know the 10/100/1000 Gigabit Network Adapter	3
Port and LEDs	3
Chapter 3: Installing the 10/100/1000 Gigabit Network Adapter in Your PC	4
Hardware Installation	4
Chapter 4: Installing the Driver for Windows XP	5
Overview	5
Instructions for Installing the Driver	5
Instructions for Uninstalling the Adapter	6
Chapter 5: Installing the Driver for Windows 2000	7
Overview	7
Instructions for Installing the Driver	7
Instructions for Uninstalling the Adapter	9
Chapter 6: Installing the Driver for Windows Millennium or 98SE	10
Overview	10
Instructions for Installing the Driver	10
Instructions for Uninstalling the Adapter	12
Chapter 7: Configuring the 10/100/1000 Gigabit Network Adapter in Windows XP or 2000	13
Overview	13
Instructions for Accessing the Adapter's Configuration	13
Adapter Configuration	13
Chapter 8: Configuring the 10/100/1000 Gigabit Network Adapter in Windows Millennium or 98SE	16
Overview	16
Instructions for Accessing the Adapter's Configuration	16
Adapter Configuration	16
Appendix A: Troubleshooting	19
Common Problems and Solutions	19

Appendix B: Windows Help	23
Appendix C: Glossary	24
Appendix D: Specifications	30
Appendix E: Warranty Information	31
Appendix F: Regulatory Information	32
Appendix G: Contact Information	33

# List of Figures

Figure 2-1: Port and LEDs	3
Figure 3-1: Insert the Adapter into the PCI Slot	4
Figure 3-2: Set the Adapter Firmly in Place	4
Figure 3-3: Connect the Ethernet Network Cable	4
Figure 4-1: Welcome	5
Figure 4-2: Search This Location	5
Figure 4-3: Driver Installation Complete	5
Figure 4-4: Device Manager for Windows XP	6
Figure 4-5: Confirm Device Removal	6
Figure 5-1: Welcome	7
Figure 5-2: Install Hardware Device Drivers	7
Figure 5-3: Locate Driver Files	7
Figure 5-4: Driver Location	8
Figure 5-5: Driver Files Search Results	8
Figure 5-6: Driver Installation Complete	8
Figure 5-7: Computer Management for Windows 2000	9
Figure 5-8: Confirm Device Removal	9
Figure 6-1: Add New Hardware Wizard	10
Figure 6-2: Enter Location of Driver	10
Figure 6-3: Driver Files Search Results	10
Figure 6-4: Driver Installation Complete	11
Figure 6-5: Restart Computer	11
Figure 6-6: Device Manager for Windows Me or 98SE	12
Figure 6-7: Confirm Device Removal	12
Figure 6-8: System Settings Change	12
Figure 7-1: Device Manager for Windows XP or 2000	13
Figure 7-2: General Tab for Windows XP or 2000	13
Figure 7-3: Advanced Tab for Windows XP or 2000	14

Figure 7-4: Driver Tab for Windows XP or 2000	14
Figure 7-5: Confirm Device Removal	14
Figure 7-6: Resources Tab for Windows XP or 2000	15
Figure 7-7: Power Management Tab for Windows XP or 2000	15
Figure 8-1: Device Manager for Windows Me or 98SE	16
Figure 8-2: General Tab for Windows Me or 98SE	16
Figure 8-3: Driver Tab for Windows Me or 98SE	17
Figure 8-4: Resources Tab for Windows Me or 98SE	17
Figure 8-5: Power Management Tab for Windows Me or 98SE	18

# Chapter 1: Introduction

## Welcome

Thank you for choosing the 10/100/1000 Gigabit Network Adapter. Built to run the fastest video, publishing, and database network applications, the Gigabit Network Adapter is a high performance network adapter for PCI local bus computers. Boasting an incredible maximum data throughput of 2000 megabits-per-second in full duplex mode, it includes a 10BaseT/100BaseTX/1000BaseTX port, which means that you can begin integrating Gigabit now—even if you don't plan on upgrading to a 1000Mbps network right away.

**Full duplex:** the ability of a networking device to receive and transmit data simultaneously.

The Gigabit Network Adapter is Windows Plug-and-Play compatible. Wake-On-LAN support is built in—you can wake up your workstations from anywhere on the network! Built-in support for the widest range of PCI motherboards, networking hardware, and software means you don't have to worry about compatibility.

Use the instructions in this Guide to help you install the Gigabit Network Adapter in your PC, install its driver, and configure it. These instructions should be all you need to get the most out of the Gigabit Network Adapter.

## What's in this Guide?

This user guide covers the steps for installing the Adapter, installing its driver, and configuring it.

- Chapter 1: Introduction  
This chapter describes the Adapter's applications and this User Guide.
- Chapter 2: Getting to Know the 10/100/1000 Gigabit Network Adapter  
This chapter describes the physical features of the Adapter.
- Chapter 3: Installing the 10/100/1000 Gigabit Network Adapter in Your PC  
This chapter instructs you on how to install the Adapter inside your PC.
- Chapter 4: Installing the Driver for Windows XP  
This chapter explains how to install the Windows XP driver for the Adapter.
- Chapter 5: Installing the Driver for Windows 2000  
This chapter explains how to install the Windows 2000 driver for the Adapter.
- Chapter 6: Installing the Driver for Windows Millennium or 98SE  
This chapter explains how to install the Windows Millennium or 98SE driver for the Adapter.

## 10/100/1000 Gigabit Network Adapter

- Chapter 7: Configuring the 10/100/1000 Gigabit Network Adapter in Windows XP or 2000  
This chapter instructs you on how to configure the Adapter in Windows XP or 2000.
- Chapter 8: Configuring the 10/100/1000 Gigabit Network Adapter in Windows Millennium or 98SE  
This chapter instructs you on how to configure the Adapter in Windows Millennium or 98SE.
- Appendix A: Troubleshooting  
This appendix describes some potential problems and solutions regarding use of the Adapter.
- Appendix B: Windows Help  
This appendix describes how you can use Windows Help for instructions about networking, such as installing the TCP/IP protocol.
- Appendix C: Glossary  
This appendix gives a brief glossary of terms frequently used in networking.
- Appendix D: Specifications  
This appendix provides the technical specifications for the Adapter.
- Appendix E: Warranty Information  
This appendix supplies the warranty information for the Adapter.
- Appendix F: Regulatory Information  
This appendix supplies the regulatory information regarding the Adapter.
- Appendix G: Contact Information  
This appendix provides contact information for a variety of Linksys resources, including Technical Support.



# Chapter 2: Getting to Know the 10/100/1000 Gigabit Network Adapter

## Port and LEDs

The Adapter's port and LEDs are located on the metal panel.



Figure 2-1: Port and LEDs

<b>RJ-45 Port</b>	The <b>RJ-45</b> port is where you will connect your Ethernet network cable.
<b>Gigabit LED</b>	Green. The <b>Gigabit</b> LED lights up when the Adapter is operating at 1000Mbps. If the Gigabit LED is not lit and the PC is powered on, the Adapter has automatically determined that your network is operating at a slower speed and adjusted accordingly.
<b>Link/Act LED</b>	Orange. The <b>Link/Act</b> LED lights up when the Adapter is connected to a network. It flashes when there is network activity.

# Chapter 3: Installing the 10/100/1000 Gigabit Network Adapter in Your PC

## Hardware Installation

1. Power off your PC and any peripheral equipment attached to it. Unplug your PC's power cord.
2. Open your PC's case, and locate an available PCI slot on the motherboard. Check with your computer manufacturer if you need instructions.
3. Remove the metal PCI slot cover on the back of the PC.
4. Insert the Adapter into the PCI slot. Make sure that all of its pins are touching the slot's contacts. You may have to apply a bit of pressure to slide the Adapter all the way in.
5. After the Adapter is set firmly in place, secure its fastening tab to your PC's chassis with a mounting screw. Then close your PC's case.
6. Connect one end of the Ethernet network cable to the RJ-45 port of the Adapter. (Category 5e or better Ethernet network cabling is required for Gigabit transmission speeds.)
7. Connect the other end of the Ethernet network cable to your network's Gigabit hub or switch port.
8. Reconnect your PC's power cord, and then power on your computer.

Now that the hardware installation is complete, you will install the appropriate Windows driver for the Adapter. Proceed to the chapter for your PC's operating system.

For Windows XP, go to "Chapter 4: Installing the Driver for Windows XP."

For Windows 2000, go to "Chapter 5: Installing the Driver for Windows 2000."

For Windows Millennium or 98SE, go to "Chapter 6: Installing the Driver for Windows Millennium or 98SE."



Figure 3-1: Insert the Adapter into the PCI Slot

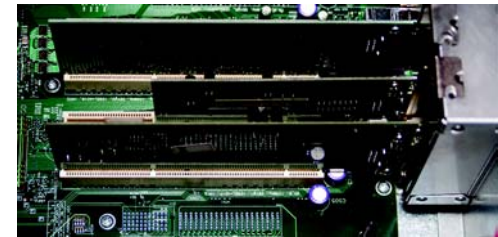


Figure 3-2: Set the Adapter Firmly in Place



Figure 3-3: Connect the Ethernet Network Cable



**NOTE:** For best results, Linksys recommends using Category 5e or better Ethernet network cabling. This is the only cabling that will work for Gigabit transfer speeds. (You can use Category 5 Ethernet network cabling for 100Mbps or lower speeds.) The cable run from the Adapter to the network hub or switch should not exceed 328 feet (100 meters).

# Chapter 4: Installing the Driver for Windows XP

## Overview

After physically installing the Adapter in your computer, follow these instructions to install the driver required for Windows XP. If you need to uninstall the Adapter, refer to the “Instructions for Uninstalling the Adapter” section at the end of this chapter.

## Instructions for Installing the Driver

1. Power on your computer. Make sure you have administrative rights on your computer; otherwise you cannot install the driver.
2. Windows XP will automatically detect the presence of the Adapter in your computer. Insert the Driver CD into your computer's CD-ROM drive.
3. On the *Welcome* screen of the Found New Hardware Wizard, select **Install from a list or specific location (Advanced)**, and click the **Next** button.
4. Select **Search for the best driver in these locations**. Then select **Include this location in the search**, and enter **D:\WinXP** in the field provided (if “D” is the letter of your hard drive). Then click the **Next** button.
5. When Windows XP has finished installing the driver, the *Completing the Found New Hardware Wizard* screen will appear. Click the **Finish** button.

The Windows XP driver installation is complete. If you want to configure the Adapter, refer to “Chapter 7: Configuring the 10/100/1000 Gigabit Network Adapter in Windows 2000 or XP” for more information. If you want to share files or printers, refer to Windows Help.

If you need to uninstall the Adapter, proceed to the “Instructions for Uninstalling the Adapter” section.



Figure 4-1: Welcome



Figure 4-2: Search This Location



Figure 4-3: Driver Installation Complete

## Instructions for Uninstalling the Adapter

1. If you are using Windows XP, click **Start**. Select **Settings** and click **Control Panel**. Double-click **System** and click the **Hardware** tab.
2. Click **Device Manager** and then the + sign next to Network adapters. Right-click the **Gigabit Network Adapter**, and click **Uninstall**.
3. On the *Confirm Device Removal* screen, click the **OK** button.



Figure 4-4: Device Manager for Windows XP



Figure 4-5: Confirm Device Removal

# Chapter 5: Installing the Driver for Windows 2000

## Overview

After physically installing the Adapter in your computer, follow these instructions to install the driver required for Windows 2000. If you need to uninstall the Adapter, refer to the “Instructions for Uninstalling the Adapter” section at the end of this chapter.

## Instructions for Installing the Driver

1. Power on your computer. Make sure you have administrative rights on your computer; otherwise you cannot install the driver.
2. Windows 2000 will automatically detect the presence of the Adapter in your computer. Insert the Driver CD into your computer's CD-ROM drive.
3. On the *Welcome* screen of the Found New Hardware Wizard, click the **Next** button.
4. On the *Install Hardware Device Drivers* screen, select **Search for a suitable driver for my device (recommended)**. Then click the **Next** button.
5. On the *Locate Driver Files* screen, select **Specify a location**, and click the **Next** button.



Figure 5-1: Welcome



Figure 5-2: Install Hardware Device Drivers



Figure 5-3: Locate Driver Files

## 10/100/1000 Gigabit Network Adapter

6. In the field provided, enter **D:\WIN2000** (if “D” is the letter of your hard drive). Then click the **OK** button.
7. On the *Driver Files Search Results* screen, click the **Next** button.
8. When Windows 2000 has finished installing the driver, the *Completing the Found New Hardware Wizard* screen will appear. Click the **Finish** button.

The Windows 2000 driver installation is complete. If you want to configure the Adapter, refer to “Chapter 7: Configuring the 10/100/1000 Gigabit Network Adapter in Windows 2000 or XP” for more information. If you want to share files or printers, refer to Windows Help.

If you need to uninstall the Adapter, proceed to the “Instructions for Uninstalling the Adapter” section.



Figure 5-4: Driver Location

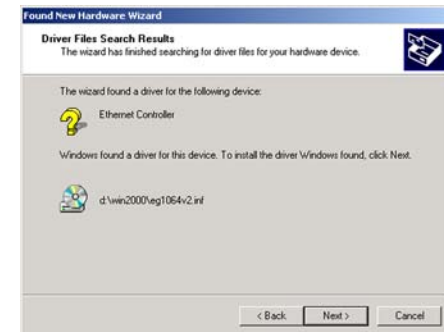


Figure 5-5: Driver Files Search Results



Figure 5-6: Driver Installation Complete

## Instructions for Uninstalling the Adapter

1. If you are using Windows 2000, click **Start**. Select **Settings** and click **Control Panel**. Double-click **Administrative Tools** and then double-click **Computer Management**.
2. Click the **Device Manager** tab and then the + sign next to Network adapters.
3. Right-click the **Gigabit Network Adapter**, and click **Uninstall**.
4. On the *Confirm Device Removal* screen, click the **OK** button.

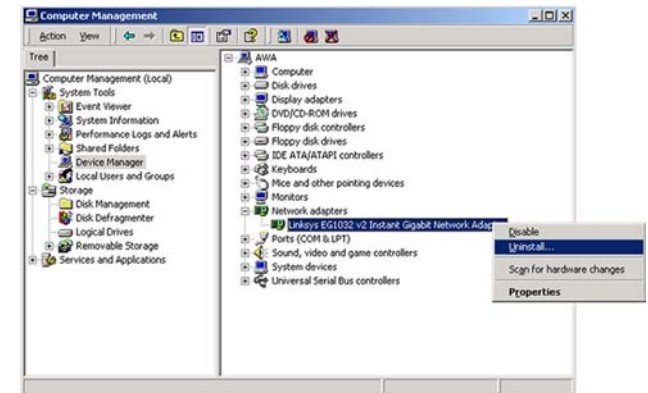


Figure 5-7: Computer Management for Windows 2000



Figure 5-8: Confirm Device Removal



# Chapter 6: Installing the Driver for Windows Millennium or 98SE

## Overview

After physically installing the Adapter in your computer, follow these instructions to install the driver required for Windows Millennium or 98SE. If you need to uninstall the Adapter, refer to the “Instructions for Uninstalling the Adapter” section at the end of this chapter.

## Instructions for Installing the Driver

1. Power on your computer. Make sure you have administrative rights on your computer; otherwise you cannot install the driver.
2. Windows Millennium or 98SE will automatically detect the presence of the Adapter in your computer. Insert the Driver CD into your computer's CD-ROM drive.
3. On the first screen of the Add New Hardware Wizard, select **Specify the location of the driver (Advanced)**. Then click the **Next** button.
4. Select **Search for the best driver for my device. (Recommended)**. Select **Specify a location:**.

If your computer is running Windows Millennium, enter **D:\WinME** in the field provided (if “D” is the letter of your hard drive).

If your computer is running Windows 98SE, enter **D:\Win98** in the field provided (if “D” is the letter of your hard drive).

Then click the **Next** button.

5. After Windows has found the driver, click the **Next** button.



Figure 6-1: Add New Hardware Wizard



Figure 6-2: Enter Location of Driver



Figure 6-3: Driver Files Search Results



6. When Windows Millennium or 98SE has finished installing the driver, click the **Finish** button.
7. The *System Settings Change* screen will appear and ask you if you want to restart your computer. If you want to restart your computer now to finish the driver installation, click the **Yes** button. If you want to restart your computer later, click the **No** button.

After you have restarted your computer, the Windows Millennium or 98SE driver installation will be complete. If you want to configure the Adapter, refer to “Chapter 8: Configuring the 10/100/1000 Gigabit Network Adapter in Windows Millennium or 98SE” for more information. If you want to share files or printers, refer to Windows Help.

If you need to uninstall the Adapter, proceed to the “Instructions for Uninstalling the Adapter” section.

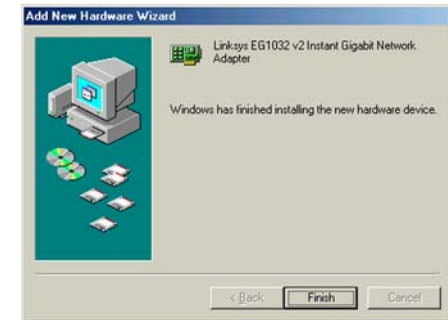


Figure 6-4: Driver Installation Complete



Figure 6-5: Restart Computer

## Instructions for Uninstalling the Adapter

1. On your desktop, right-click **My Computer** and click **Properties**.
2. Click the **Device Manager** tab and then the + sign next to Network adapters.
3. Click the **Gigabit Network Adapter**, and click the **Remove** button.
4. On the *Confirm Device Removal* screen, click the **OK** button.
5. The *System Settings Change* screen will appear and ask you if you want to restart your computer. If you want to restart your computer now to finish removing the Adapter, click the **Yes** button. If you want to restart your computer later, click the **No** button.

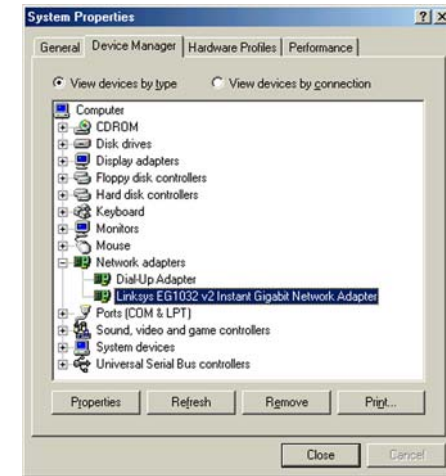


Figure 6-6: Device Manager for Windows Me or 98SE



Figure 6-7: Confirm Device Removal



Figure 6-8: System Settings Change

# Chapter 7: Configuring the 10/100/1000 Gigabit Network Adapter in Windows XP or 2000

## Overview

Linksys recommends that you use the default settings of the Adapter; however, if you wish to alter the default settings, then follow these instructions to access the Adapter's configuration in Windows XP or 2000.

## Instructions for Accessing the Adapter's Configuration

1. If you are using Windows XP, click **Start**. Select **Settings** and click **Control Panel**. Double-click **System** and click the **Hardware** tab. Proceed to step 2.

If you are using Windows 2000, click **Start**. Select **Settings** and click **Control Panel**. Double-click **Administrative Tools** and then double-click **Computer Management**.

2. Click the **Device Manager** tab and then the + sign next to Network adapters. Right-click the **Gigabit Network Adapter**, and click **Properties**.
3. The *General* tab will appear. Make changes to the Adapter's configuration using this and four additional tabs.



Figure 7-1: Device Manager for Windows XP or 2000

## Adapter Configuration

The Adapter offers five configuration tabs: General, Advanced, Driver, Resources, and Power Management.

### General

You will be able to access the Device usage feature and start the troubleshooter from this tab. Click the **OK** button to save any change.

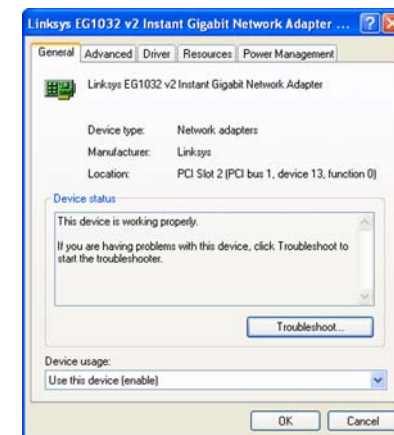


Figure 7-2: General Tab for Windows XP or 2000

Advanced

In the *Property* window, you have several properties you can configure. Select the Property you want, and select the correct setting from the *Value* drop-down menu. When you have finished your changes, click the **OK** button to save your changes.

Driver

On this tab, click the **Driver Details** button to view details about the driver files. Click the **Update Driver** button to update the driver. If the Adapter fails after you upgrade its driver, click the **Roll Back Driver** button to roll back to the previously installed driver (the Roll Back Driver feature is not available in Windows 2000). To uninstall the driver, click the **Uninstall** button. The *Confirm Device Removal* screen will appear and ask you to confirm that you want to uninstall the Adapter. Click the **OK** button to uninstall.

When you have finished, click the **OK** button.

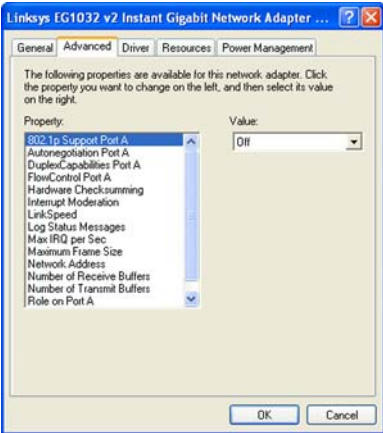


Figure 7-3: Advanced Tab for Windows XP or 2000



Figure 7-4: Driver Tab for Windows XP

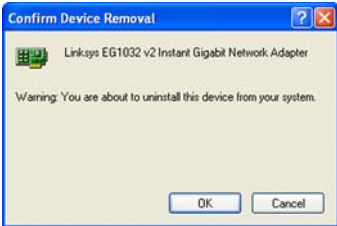


Figure 7-5: Confirm Device Removal

## Resources

To change the setting of a resource, select a Resource type. Then click the **Change Setting** button. Select the new setting, and click the **OK** button. If you want to use the automatic setting, click the checkbox next to *Use automatic settings*, and click the **OK** button.

## Power Management

If you want to allow the computer to power down the Adapter for energy-saving purposes, click the checkbox next to *Allow the computer to turn off this device to save power*.

If you want to allow the Adapter to bring the computer out of standby mode, then click the checkbox next to *Allow this device to bring the computer out of standby*. If this feature is enabled and your computer is using Windows XP, another feature will be available; click the checkbox next to *Only allow management stations to bring the computer out of standby* if you want to enable this feature.

When you have finished, click the **OK** button to save any changes.

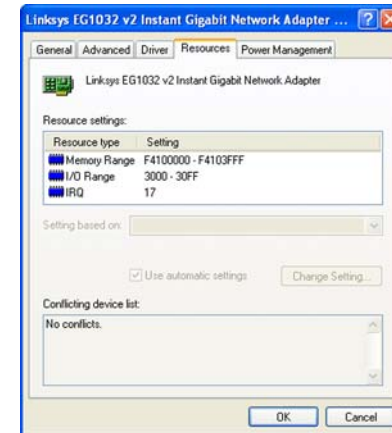


Figure 7-6: Resources Tab for Windows XP or 2000

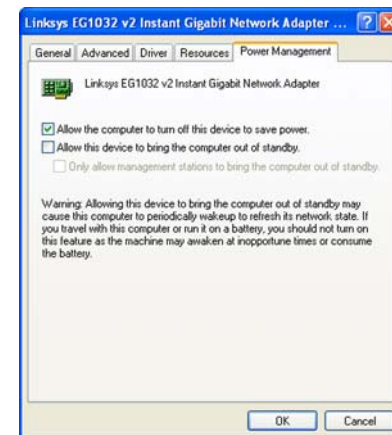


Figure 7-7: Power Management Tab for Windows XP

# Chapter 8: Configuring the 10/100/1000 Gigabit Network Adapter in Windows Millennium or 98SE

## Overview

Linksys recommends that you use the default settings of the Adapter; however, if you wish to alter the default settings, then follow these instructions to access the Adapter's configuration in Windows Millennium or 98SE.

## Instructions for Accessing the Adapter's Configuration

1. On your desktop, right-click **My Computer** and click **Properties**.
2. Click the **Device Manager** tab and then the + sign next to Network adapters. Click the **Gigabit Network Adapter**, and click the **Properties** button.
3. The *General* tab will appear. Make changes to the Adapter's configuration using this and three additional tabs.

## Adapter Configuration

The Adapter offers four configuration tabs: General, Driver, Resources, and Power Management.

### General

You will be able to access the Device usage settings through this tab. Click the **OK** button to save any change.

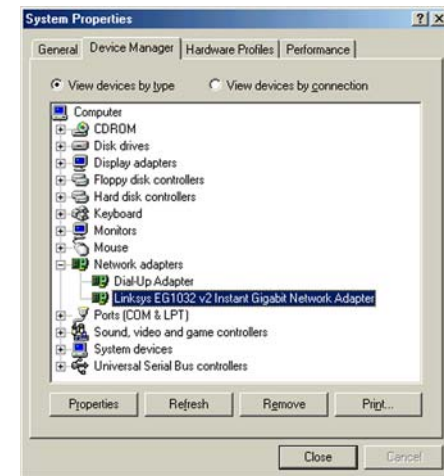


Figure 8-1: Device Manager for Windows Me or 98SE

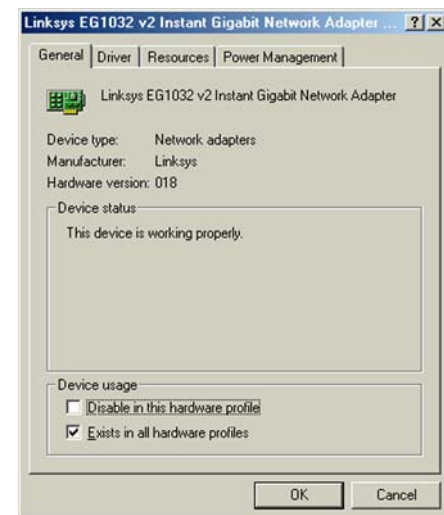


Figure 8-2: General Tab for Windows Me or 98SE

## Driver

On this tab, click the **Driver File Details** button to view details about the driver files. Click the **Update Driver** button to update the driver. When you have finished, click the **OK** button.

## Resources

To change the setting of a resource, select a Resource type. Then click the **Change Setting** button. Select the new setting, and click the **OK** button. If you want to use the automatic setting, click the checkbox next to *Use automatic settings*, and click the **OK** button.



Figure 8-3: Driver Tab for Windows Me or 98SE

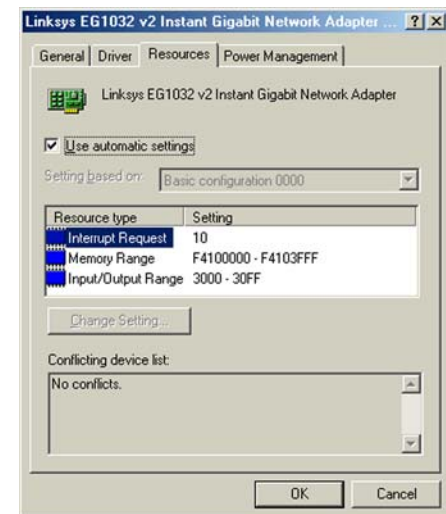


Figure 8-4: Resources Tab for Windows Me or 98SE

## Power Management

If you want to allow the computer to power down the Adapter for energy-saving purposes, click the checkbox next to *Allow the computer to turn off this device to save power.*

If you want to allow the Adapter to bring the computer out of standby mode, then click the checkbox next to *Allow this device to bring the computer out of standby.*

When you have finished, click the **OK** button to save your changes.

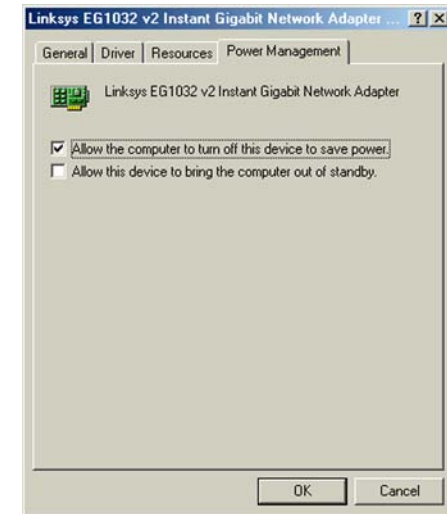


Figure 8-5: Power Management Tab for Windows Me or 98SE



# Appendix A: Troubleshooting

This appendix consists of two parts: “Common Problems and Solutions” and “Frequently Asked Questions.” This appendix provides solutions to problems that may occur during the installation and operation of the Gigabit Network Adapter. Read the description below to solve your problems. If you can't find an answer here, check the Linksys website at [www.linksys.com](http://www.linksys.com).

## Common Problems and Solutions

**1. *Windows does not detect the Adapter installed, or it attempts to reinstall the Adapter each time you restart your PC.***

Go through this checklist until your problem is solved:

- Make sure the Adapter is securely located in the appropriate PCI slot.
- Insert the Adapter into an alternate PCI slot.
- You may have previously aborted a new hardware setup. Go to Windows Help to learn how to reinstall all of your Windows networking components.
- The motherboard in your system might not be Plug-and-Play compatible, your PC's Plug-and-Play settings may not be enabled, or the motherboard may have Plug-and-Play options not supported by Windows 98SE. If you are not sure, contact the manufacturer of your PC.

**2. *Windows cannot locate the driver for the Adapter.***

Go through this checklist until your problem is solved:

- Check the Driver CD you inserted into your PC's CD-ROM drive.
- The CD may be defective or files may be missing. Make sure the CD has files in D:\ starting with **WIN**.

**3. *The Windows logon screen doesn't appear after I restart my computer.***

Click **Start**, **Shut Down**, **Close All Programs**, and **Logon as a Different User** (in Windows 98SE, select **Log Off**). If this doesn't solve the problem, your PC's manufacturer may have disabled Windows networking. Contact the manufacturer for help.

**4. *After entering a username and password, a window appear that reads, "No Domain Server could be found to validate your Username and Password."***

Follow these instructions:

1. Click **Start**, **Settings**, and **Control Panel**.
2. Double-click **Network**.
3. Click the **Configuration** tab.
4. Under the *Following Network Components are Installed* box, highlight **Client for Microsoft Networks** and click the **Properties** button.

5. When you are in the *Client for Microsoft Networks Properties* window, make sure that *Log on to Windows NT Domain* is unchecked. Once you have made sure that it is unchecked, click the **OK** button.
6. Restart your computer.

**5. On the Access Control tab, User Level Access is selected, but Shared Level Access is grayed out and not accessible.**

Go through this checklist until your problem is solved:

- You previously had your primary network logon set to Client for NetWare Networks. On the *Configuration* tab of the *Network Properties* window, ensure that your primary network logon is set to *Client for Microsoft Networks*.
- Your personal web server PC or Microsoft Front Page may require you to choose a user level for security reasons.

**6. In Network Neighborhood, I can only see my own computer and no other computers on the network.**

Go through this checklist until your problem is solved:

- Make sure all the cables are connected correctly. Make sure the Link/Act LEDs are active on both the Adapter and your network switch or hub. Try a different Ethernet network cable that you know is good.
- Your computer's workgroup name may be different from the other computers on your network. Make sure each computer on the network is using the same workgroup name and protocol.
- Use the Find Computer function to search for other computers. Refer to Windows Help for more information.

**7. In Network Neighborhood, I can see all the other computers on the network but not my own computer, and all other computers can see each other but not my own computer.**

Go through this checklist until your problem is solved:

- You may not have enabled File and Printer Sharing. Refer to Windows Help for instructions.
- The Adapter might not be configured properly. Try reinstalling the Adapter's driver. To clear your system of the old installation, refer to Windows Help to learn how to reinstall all of your Windows networking components.

**8. Network Neighborhood is empty.**

Verify that your Microsoft Client is installed. Refer to Windows Help for instructions if you need to install Microsoft Client. Then verify that you have logged in correctly. Refresh the screen by pressing F5 several times.

**9. I am receiving DHCP errors in Windows.**

- If you are connecting to a DHCP server, check your cabling connection. If your network requires TCP/IP, check with your network administrator or Windows Help for proper settings.

- If you do not have a DHCP server on your network and your network does not require TCP/IP, you may remove the TCP/IP Protocol from Windows networking. Refer to Windows Help for specific instructions on how to remove one of your computer's network components, specifically TCP/IP.

**10. In Network Neighborhood, I can only see computers running the same operating system as my own computer (e.g., my PC is running Windows 98SE, and it can only see other Windows 98SE computers).**

Follow these instructions:

- Select **Start**, **Find**, **Computer**, and enter the name of the computer in the *Network Neighborhood* window that appear. Click **Find Now**.
- Make sure you are using the same protocol(s) and workgroup name on the computers.
  1. Click **Start**, **Settings**, and **Control Panel** on two computers running different Windows operating systems.
  2. Click the **Network** icon, choose the **Configuration** tab, and click the **Identification** tab for the Workgroup name. Compare the protocols on both computers and make sure they are the same. If any protocols are missing, refer to Windows Help to install any needed protocol(s).
- If all computers are using the same protocol(s) and Workgroup name, and Windows 98SE computers can't see Windows Me computers, enable NetBIOS on all the computers using Windows 98SE and Windows Me.

Perform the following steps:

1. The IPX/SPX-compatible protocol should be installed on all Windows computers (refer to Windows Help if you need to add this protocol).
2. Bring up the properties of the IPX/SPX-compatible protocol by clicking **Start**, **Settings**, and **Control Panel**.
3. Double-click the **Network** icon.
4. Choose the **Configuration** tab and highlight **IPX/SPX-compatible Protocol**.
5. Click **Properties**.
6. To install NetBIOS, click the **NetBIOS** tab.
7. Check the box next to *I want to enable NetBIOS over IPX/SPX*.
8. Click the **OK** button, and click **OK** again.
9. Windows will copy the appropriate files to your computer. When asked to restart your PC, remove any disks or CDs from your computer, and click **OK**.
10. Be sure to perform steps 1-9 for all computers that are having trouble seeing your entire network.

**11. The workgroup, protocols, cabling and driver are all working properly, but the PC uses an AMD processor and it can only see itself in the Network Neighborhood.**

In some instances with PCs using AMD processors, the IRQ assigned to the Adapter by the BIOS—as it gets listed on the boot-up screens of most PCs—doesn't correspond to the IRQ assigned by Windows. This can be fixed by disabling the IRQ holder for PCI Steering in the Windows Device Manager. Refer to your PC's documentation for instructions or follow the suggested instructions below. (Keep in mind that this procedure will vary depending on your computer's configuration.)

1. Click **Start**, **Settings**, and **Control Panel**.
2. Double-click the **System** icon.
3. Click the **Device Manager** tab.
4. Open **System Devices** and **PCI Bus**.
5. Click the **IRQ Steering** tab. Remove the checkmark from *Use IRQ Holder* and click the **OK** button.
6. Windows will ask you to restart the computer. If it doesn't ask you, then reboot the computer manually.
7. After the computer boots up, Windows will try to re-detect the PCI Steering. Continue rebooting the PC until Windows stops detecting new hardware and settings for PCI Steering. This normally takes a total of four reboots.

# Appendix B: Windows Help

Most Linksys products require Microsoft Windows. Windows is the most used operating system in the world and comes with many features that help make networking easier. These features can be accessed through Windows Help and are described in this appendix.

## TCP/IP

Before a computer can communicate with a network router, TCP/IP must be enabled. TCP/IP is a set of instructions, or protocol, all PCs follow to communicate over a network. This is true for wireless networks as well. Your PCs will not be able to utilize wireless networking without having TCP/IP enabled. Windows Help provides complete instructions on enabling TCP/IP.

## Shared Resources

If you wish to share printers, folder, or files over your network, Windows Help provides complete instructions on utilizing shared resources.

## Network Neighborhood/My Network Places

Other PCs on your network will appear under Network Neighborhood or My Network Places (depending upon the version of Windows you're running). Windows Help provides complete instructions on adding PCs to your network.

# Appendix C: Glossary

**802.11a** - An IEEE wireless networking standard that specifies a maximum data transfer rate of 54Mbps and an operating frequency of 5GHz.

**802.11b** - An IEEE wireless networking standard that specifies a maximum data transfer rate of 11Mbps and an operating frequency of 2.4GHz.

**802.11g** - An IEEE wireless networking standard that specifies a maximum data transfer rate of 54Mbps, an operating frequency of 2.4GHz, and backward compatibility with 802.11b devices.

**Access Point** - Device that allows wireless-equipped computers and other devices to communicate with a wired network. Also used to expand the range of a wireless network.

**Adapter** - This is a device that adds network functionality to your PC.

**Ad-hoc** - A group of wireless devices communicating directly with each other (peer-to-peer) without the use of an access point.

**Backbone** - The part of a network that connects most of the systems and networks together, and handles the most data.

**Bandwidth** - The transmission capacity of a given device or network.

**Beacon Interval** - The frequency interval of the beacon, which is a packet broadcast by a router to synchronize a wireless network.

**Bit** - A binary digit.

**Boot** - To start a device and cause it to start executing instructions.

**Bridge** - A device that connects two different kinds of local networks, such as a wireless network to a wired Ethernet network.

**Broadband** - An always-on, fast Internet connection.

**Browser** - A browser is an application program that provides a way to look at and interact with all the information on the World Wide Web.

**Buffer** - A block of memory that temporarily holds data to be worked on later when a device is currently too busy to accept the data.

**Cable Modem** - A device that connects a computer to the cable television network, which in turn connects to the Internet.

**CSMA/CA** (Carrier Sense Multiple Access/Collision Avoidance) - A method of data transfer that is used to prevent data loss in a network.

**CTS** (Clear To Send) - A signal sent by a device to indicate that it is ready to receive data.

**Daisy Chain** - A method used to connect devices in a series, one after the other.

**Database** - A collection of data that is organized so that its contents can easily be accessed, managed, and updated.

**DDNS** (Dynamic Domain Name System) - The capability of having a website, FTP, or e-mail server-with a dynamic IP address-use a fixed domain name.

**Default Gateway** - A device that forwards Internet traffic from your local area network.

**DHCP** (Dynamic Host Configuration Protocol) - A protocol that lets one device on a local network, known as a DHCP server, assign temporary IP addresses to the other network devices, typically computers.

**DMZ** (Demilitarized Zone) - Removes the Router's firewall protection from one PC, allowing it to be "seen" from the Internet.

**DNS** (Domain Name Server) - The IP address of your ISP's server, which translates the names of websites into IP addresses.

**Domain** - A specific name for a network of computers.

**Download** - To receive a file transmitted over a network.

**DSL** (Digital Subscriber Line) - An always-on broadband connection over traditional phone lines.

**DSSS** (Direct-Sequence Spread-Spectrum) - A type of radio transmission technology that includes a redundant bit pattern to lessen the probability of data lost during transmission. Used in 802.11b networking.

**DTIM** (Delivery Traffic Indication Message) - A message included in data packets that can increase wireless efficiency.

**Dynamic IP Address** - A temporary IP address assigned by a DHCP server.

**Encryption** - Encoding data to prevent it from being read by unauthorized people.

**Ethernet** - An IEEE standard network protocol that specifies how data is placed on and retrieved from a common transmission medium.

**Finger** - A program that tells you the name associated with an e-mail address.

**Firewall** - Security measures that protect the resources of a local network from intruders.

**Firmware** - 1. In network devices, the programming that runs the device. 2. Programming loaded into read-only memory (ROM) or programmable read-only memory (PROM) that cannot be altered by end-users.

**Fragmentation** - Breaking a packet into smaller units when transmitting over a network medium that cannot support the original size of the packet.

**FTP (File Transfer Protocol)** - A standard protocol for sending files between computers over a TCP/IP network and the Internet.

**Full Duplex** - The ability of a networking device to receive and transmit data simultaneously.

**Gateway** - A system that interconnects networks.

**Half Duplex** - Data transmission that can occur in two directions over a single line, but only one direction at a time.

**Hardware** - The physical aspect of computers, telecommunications, and other information technology devices.

**HTTP (HyperText Transport Protocol)** - The communications protocol used to connect to servers on the World Wide Web.

**IEEE (The Institute of Electrical and Electronics Engineers)** - An independent institute that develops networking standards.

**Infrastructure** - Currently installed computing and networking equipment.

**Infrastructure Mode** - Configuration in which a wireless network is bridged to a wired network via an access point.

**IP (Internet Protocol)** - A protocol used to send data over a network.

**IP Address** - The address used to identify a computer or device on a network.



**IPCONFIG** - A Windows 2000 and XP utility that displays the IP address for a particular networking device.

**IPSec** (Internet Protocol Security) - A VPN protocol used to implement secure exchange of packets at the IP layer.

**ISM band** - Radio band used in wireless networking transmissions.

**ISP** (Internet Service Provider) - A company that provides access to the Internet.

**LAN** (Local Area Network) - The computers and networking products that make up the network in your home or office.

**MAC** (Media Access Control) Address - The unique address that a manufacturer assigns to each networking device.

**Mbps** (Megabits Per Second) - One million bits per second; a unit of measurement for data transmission.

**Multicasting** - Sending data to a group of destinations at once.

**NAT** (Network Address Translation) - NAT technology translates IP addresses of a local area network to a different IP address for the Internet.

**Network** - A series of computers or devices connected for the purpose of data sharing, storage, and/or transmission between users.

**NNTP** (Network News Transfer Protocol) - The protocol used to connect to Usenet groups on the Internet.

**Node** - A network junction or connection point, typically a computer or work station.

**OFDM** (Orthogonal Frequency Division Multiplexing) - A type of modulation technology that separates the data stream into a number of lower-speed data streams, which are then transmitted in parallel. Used in 802.11a, 802.11g, and powerline networking.

**Packet** - A unit of data sent over a network.

**Passphrase** - Used much like a password, a passphrase simplifies the WEP encryption process by automatically generating the WEP encryption keys for Linksys products.

**Ping** (Packet INternet Groper) - An Internet utility used to determine whether a particular IP address is online.

**POP3** (Post Office Protocol 3) - A standard protocol used to retrieve e-mail stored on a mail server.

**Port** - 1. The connection point on a computer or networking device used for plugging in a cable or an adapter. 2. The virtual connection point through which a computer uses a specific application on a server.

**PPPoE** (Point to Point Protocol over Ethernet) - A type of broadband connection that provides authentication (username and password) in addition to data transport.

**PPTP** (Point-to-Point Tunneling Protocol) - A VPN protocol that allows the Point to Point Protocol (PPP) to be tunneled through an IP network. This protocol is also used as a type of broadband connection in Europe.

**Preamble** - Part of the wireless signal that synchronizes network traffic.

**RJ-45** (Registered Jack-45) - An Ethernet connector that holds up to eight wires.

**Roaming** - The ability to take a wireless device from one access point's range to another without losing the connection.

**Router** - A networking device that connects multiple networks together, such as a local network and the Internet.

**RTS** (Request To Send) - A packet sent when a computer has data to transmit. The computer will wait for a CTS (Clear To Send) message before sending data.

**Server** - Any computer whose function in a network is to provide user access to files, printing, communications, and other services.

**SMTP** (Simple Mail Transfer Protocol) - The standard e-mail protocol on the Internet.

**SNMP** (Simple Network Management Protocol) - A widely used network monitoring and control protocol.

**Software** - Instructions for the computer. A series of instructions that performs a particular task is called a "program".

**Spread Spectrum** - Wideband radio frequency technique used for more reliable and secure data transmission.

**SSID** (Service Set Identifier) - Your wireless network's name.

**Static IP Address** - A fixed address assigned to a computer or device that is connected to a network.

**Static Routing** - Forwarding data in a network via a fixed path.

**Subnet Mask** - An address code that determines the size of the network.

**Switch** - 1. Device that is the central point of connection for computers and other devices in a network, so data can be shared at full transmission speeds. 2. A device for making, breaking, or changing the connections in an electrical circuit.

**TCP/IP** (Transmission Control Protocol/Internet Protocol) - A network protocol for transmitting data that requires acknowledgement from the recipient of data sent.

**Telnet** - A user command and TCP/IP protocol used for accessing remote PCs.

**TFTP** (Trivial File Transfer Protocol) - A version of the TCP/IP FTP protocol that uses UDP and has no directory or password capability.

**Throughput** - The amount of data moved successfully from one node to another in a given time period.

**Topology** - The physical layout of a network.

**TX Rate** - Transmission Rate.

**UDP** (User Datagram Protocol) - A network protocol for transmitting data that does not require acknowledgement from the recipient of the data that is sent.

**Upgrade** - To replace existing software or firmware with a newer version.

**Upload** - To transmit a file over a network.

**URL** (Uniform Resource Locator) - The address of a file located on the Internet.

**VPN** (Virtual Private Network) - A security measure to protect data as it leaves one network and goes to another over the Internet.

**WAN** (Wide Area Network) - The Internet.

**WEP** (Wired Equivalent Privacy) - A method of encrypting data transmitted on a wireless network for greater security.

**WINIPCFG** - A Windows 98 and Millennium utility that displays the IP address for a particular networking device.

**WLAN** (Wireless Local Area Network) - A group of computers and associated devices that communicate with each other wirelessly.

# Appendix D: Specifications

Model	10/100/1000 Gigabit Network Adapter
Port	One 10/100/1000Mbps, RJ-45 Port
Cabling Type	Cat5e
Dimensions (W x H x D)	4.72" x 0.71" x 6.65" (120 mm x 18 mm x 169 mm)
Unit Weight	2.12 oz. (0.06 kg)
Power	5 W Maximum
Certifications	FCC Class B, CE Mark
Operating Temp.	32°F to 122°F (0°C to 50°C)
Storage Temp.	-4°F to 158°F (-20°C to 70°C)
Operating Humidity	10% to 85%, Non-Condensing
Storage Humidity	5% to 90%, Non-Condensing

# Appendix E: Warranty Information

## LIMITED WARRANTY

Linksys warrants to You that, for a period of one year (the “Warranty Period”), your Linksys Product will be substantially free of defects in materials and workmanship under normal use. Your exclusive remedy and Linksys' entire liability under this warranty will be for Linksys at its option to repair or replace the Product or refund Your purchase price less any rebates. This limited warranty extends only to the original purchaser.

If the Product proves defective during the Warranty Period call Linksys Technical Support in order to obtain a Return Authorization Number, if applicable. BE SURE TO HAVE YOUR PROOF OF PURCHASE ON HAND WHEN CALLING. If You are requested to return the Product, mark the Return Authorization Number clearly on the outside of the package and include a copy of your original proof of purchase. RETURN REQUESTS CANNOT BE PROCESSED WITHOUT PROOF OF PURCHASE. You are responsible for shipping defective Products to Linksys. Linksys pays for UPS Ground shipping from Linksys back to You only. Customers located outside of the United States of America and Canada are responsible for all shipping and handling charges.

ALL IMPLIED WARRANTIES AND CONDITIONS OF MERCHANTABILITY OR FITNESS FOR A PARTICULAR PURPOSE ARE LIMITED TO THE DURATION OF THE WARRANTY PERIOD. ALL OTHER EXPRESS OR IMPLIED CONDITIONS, REPRESENTATIONS AND WARRANTIES, INCLUDING ANY IMPLIED WARRANTY OF NON-INFRINGEMENT, ARE DISCLAIMED. Some jurisdictions do not allow limitations on how long an implied warranty lasts, so the above limitation may not apply to You. This warranty gives You specific legal rights, and You may also have other rights which vary by jurisdiction.

This warranty does not apply if the Product (a) has been altered, except by Linksys, (b) has not been installed, operated, repaired, or maintained in accordance with instructions supplied by Linksys, or (c) has been subjected to abnormal physical or electrical stress, misuse, negligence, or accident. In addition, due to the continual development of new techniques for intruding upon and attacking networks, Linksys does not warrant that the Product will be free of vulnerability to intrusion or attack.

TO THE EXTENT NOT PROHIBITED BY LAW, IN NO EVENT WILL LINKSYS BE LIABLE FOR ANY LOST DATA, REVENUE OR PROFIT, OR FOR SPECIAL, INDIRECT, CONSEQUENTIAL, INCIDENTAL OR PUNITIVE DAMAGES, REGARDLESS OF THE THEORY OF LIABILITY (INCLUDING NEGLIGENCE), ARISING OUT OF OR RELATED TO THE USE OF OR INABILITY TO USE THE PRODUCT (INCLUDING ANY SOFTWARE), EVEN IF LINKSYS HAS BEEN ADVISED OF THE POSSIBILITY OF SUCH DAMAGES. IN NO EVENT WILL LINKSYS' LIABILITY EXCEED THE AMOUNT PAID BY YOU FOR THE PRODUCT. The foregoing limitations will apply even if any warranty or remedy provided under this Agreement fails of its essential purpose. Some jurisdictions do not allow the exclusion or limitation of incidental or consequential damages, so the above limitation or exclusion may not apply to You.

Please direct all inquiries to: Linksys, P.O. Box 18558, Irvine, CA 92623.

# Appendix F: Regulatory Information

## FCC STATEMENT

This product has been tested and complies with the specifications for a Class B digital device, pursuant to Part 15 of the FCC Rules. These limits are designed to provide reasonable protection against harmful interference in a residential installation. This equipment generates, uses, and can radiate radio frequency energy and, if not installed and used according to the instructions, may cause harmful interference to radio communications. However, there is no guarantee that interference will not occur in a particular installation. If this equipment does cause harmful interference to radio or television reception, which is found by turning the equipment off and on, the user is encouraged to try to correct the interference by one or more of the following measures:

- Reorient or relocate the receiving antenna
- Increase the separation between the equipment or devices
- Connect the equipment to an outlet other than the receiver's
- Consult a dealer or an experienced radio/TV technician for assistance

## INDUSTRY CANADA (CANADA)

This Class B digital apparatus complies with Canadian ICES-003.  
Cet appareil numérique de la classe B est conforme à la norme NMB-003 du Canada.

## EC DECLARATION OF CONFORMITY (EUROPE)

In compliance with the EMC Directive 89/336/EEC, Low Voltage Directive 73/23/EEC, and Amendment Directive 93/68/EEC, this product meets the requirements of the following standards:

- EN55022 Emission
- EN55024 Immunity

# Appendix G: Contact Information

Need to contact Linksys?

Visit us online for information on the latest products and updates to your existing products at:

<http://www.linksys.com> or  
<ftp.linksys.com>

Can't find information about a product you want to buy on the web? Do you want to know more about networking with Linksys products? Give our advice line a call at:  
Or fax your request in to:

800-546-5797 (LINKSYS)  
949-261-8868

If you experience problems with any Linksys product, you can call us at:  
Don't wish to call? You can e-mail us at:

800-326-7114  
[support@linksys.com](mailto:support@linksys.com)

If any Linksys product proves defective during its warranty period, you can call the Linksys Return Merchandise Authorization department for obtaining a Return Authorization Number at:  
(Details on Warranty and RMA issues can be found in the Warranty Information section in this Guide.)

949-261-1288