

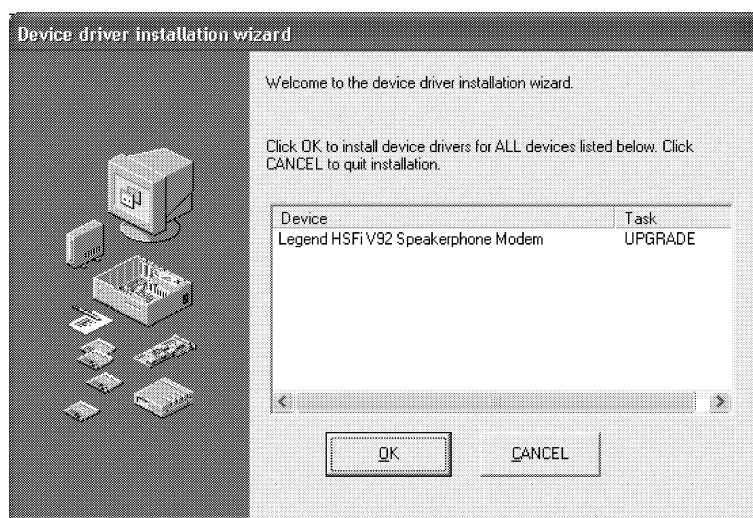
## User's guide of C11252 Modem card

### 1. Driver installation

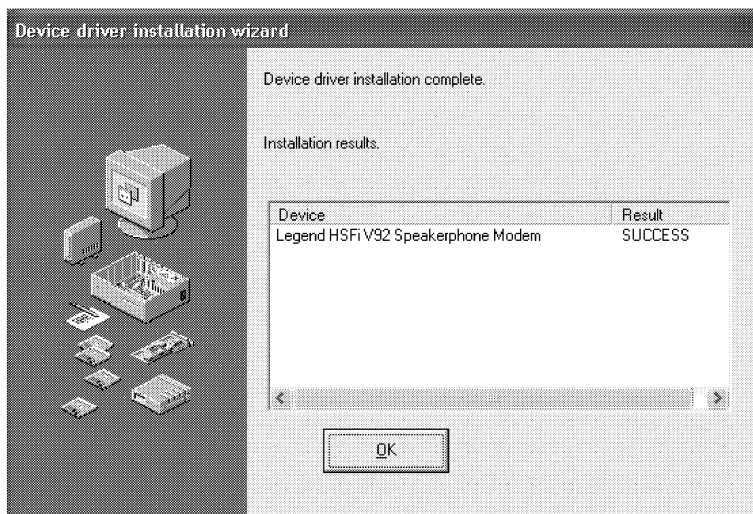
**!** Warning: You must install sound card driver first before modem driver installation.

The driver installation processes are similar in several Window operating systems. If you use Win98, please run the setup.exe file under directory "Lx\_Modem\Conexant\Win98" in the driver CD. If you use Win2000 or WindowsXP, please run the setup.exe file under directory "Lx\_Modem\Conexant\Win2000\_XP".

Now take WindowsXP as a example to explain the installation process. After running setup.exe, "Device driver installation wizard" window will appear, click "OK", the driver installation starts.



After file copy and installation, a window will appear to prompt "Device driver installation complete". Now the installation has completed.



## 2. Remove driver

If you want to upgrade modem driver, please remove the old driver first. Click "Add or Remove Programs" in control panel, then select "SoftK56 Data Fax Voice Speakerphone CARP" in the "Add or Remove Programs" window, click "Change/Remove", the remove process will complete itself.

