

Please read before use



PE-DESIGN NEXT

Personal Embroidery Design
Software System

Installation Guide



Read the following before opening the CD-ROM package

Thank you for purchasing this software. Before opening the CD-ROM package for this software, carefully read the following Product Agreement, which has been provided for this product. Use this software only if you agree to the terms of this agreement. By opening the CD-ROM package, you agree to the conditions of its use. This product cannot be returned after it has been opened.

Product Agreement

- 1) General terms
This is an agreement between you (the end-user) and our company for this product.
- 2) Use of this product
You may install and use this product on only one computer.
- 3) Limitations on duplications
You may not duplicate this product, except for backup purposes.
- 4) Limitations on modifications
You may not modify or disassemble this product in any way.
- 5) Limitations on transfer
This software may not be transferred to or used in any other way by a third party.
- 6) Warranty
We accept no responsibility for your choice or use of this product or for any damages that may arise out of its use.
- 7) Others
This product is protected by copyright laws.

Portions of this product were created using technology from Softfoundry International Pte. Ltd.

Table of Contents

Table of Contents	1
Before Use	2
Introduction	2
Package Contents	2
Optional Supply	3
Principal Parts	3
Installation	4
Please Read Before Installation	4
Installation Procedure	4
System Requirements	5
[STEP1] Installing the Software	6
[STEP2] Upgrading the USB Card Writer Module (For upgrade customer only)	10
Checking for the Latest Version of the Program	12
Technical Support	13
Online Registration	13
Uninstallation	13

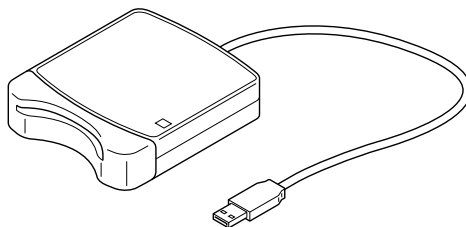
Introduction

Package Contents

Check that the following items are included. If anything is missing or damaged, contact your authorized dealer or Brother Customer Service.

■ PE-DESIGN NEXT (full version):

USB card writer module

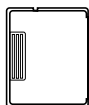


CD-ROM



Contains the software
and Instruction Manual
(PDF format).

Original card



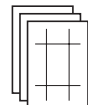
Installation Guide



Instruction Manual



Positioning sheet



■ PE-DESIGN NEXT upgrade for PE-DESIGN version 5, 6, 7 or 8:

CD-ROM



Contains the software
and Instruction Manual
(PDF format).

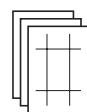
Installation Guide



Instruction Manual



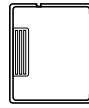
Positioning sheet



Note:

The USB card writer module and the original card are not included in the kit provided for upgrading from version 5, 6, 7 or 8.

Optional Supply



Original card



Note:

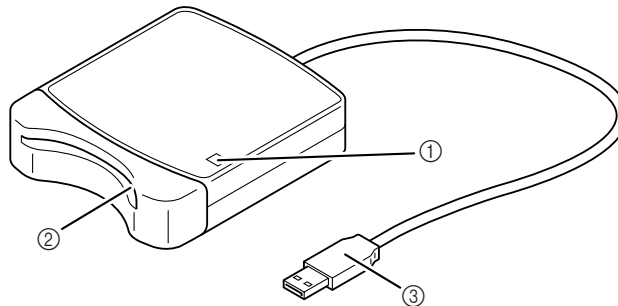
The only original cards that can be used with this USB card writer module are those like the one enclosed or optional original cards of the same type.



Memo:

Additional blank original cards can be purchased through an authorized dealer.

Principal Parts



① LED indicator

This indicator lights up when the unit is turned on, and flashes when the USB card writer module is communicating with the computer.

② Card slot

Insert an original card/embroidery card here.

③ USB connector

Connect to the computer.



Note:

Never remove an original card or unplug the USB cable while this indicator is flashing.



Memo:

- Since power is supplied to the USB card writer module through the USB connection to the computer, there is no power supply cable or power switch.
- Be sure to keep original cards away from high humidity, direct sunlight, static electricity and strong shocks. Furthermore, do not bend the cards.

Installation


Please Read Before Installation

- Before beginning the installation, check that the computer meets the system requirements.
- In order to install the software on Windows® Operating System, you must log on to the computer using an account with administrator privileges. For details on logging on to the computer using an account with administrator privileges, refer to the Windows manual.
- The installation procedure is described for Windows® 7. The procedure and dialog boxes for other operating systems may be slightly different.
- If the installation is canceled before it is completed or if the procedure is not performed as described, the software will not be installed correctly.
- Do not remove the CD-ROM from the CD-ROM drive of the computer while the installation is being performed. Remove the CD-ROM after the installation is completed.
- Before turning on the computer, be sure to disconnect the USB card writer module.
- In order to upgrade the USB card writer module, you must be able to connect to the Internet. If you cannot connect to the Internet, contact your authorized dealer or Brother Customer Service.
- If the USB card writer module is not upgraded, it can only be used the limited number of times that the software can be used. In order to upgrade the USB card writer module, be sure to perform STEP 2 on page 10.


Installation Procedure

The installation procedure is different depending on whether the full version or an upgrade of the software is being installed. Be sure to perform the installation procedures listed below.

■ Installing PE-DESIGN NEXT (full version)

 “[STEP1] Installing the Software” on page 6

■ Upgrading from version 5, 6, 7 or 8

 “[STEP1] Installing the Software” on page 6

 “[STEP2] Upgrading the USB Card Writer Module (For upgrade customer only)” on page 10

System Requirements

Before installing the software on your computer, make sure that the computer meets the following minimum PC requirements.

Computer	IBM-PC or compatible computer
Operating system	Windows® XP, Windows Vista®, Windows® 7 (32 or 64 bit)
Processor	1GHz or higher
Memory	512MB (1GB or more is recommended.)
Hard disk free space	300MB
Monitor	XGA (1024 x 768), 16-bit color or higher
Port	1 available USB
Printer	A graphic printer that is supported by your system (if you wish to print your images)
CD-ROM drive	Required for installation
Internet access	Required for upgrade

**Note:**

- *Power is supplied to the USB card writer module through the USB connection. Connect the USB card writer module to a USB connector on the computer or to a self-powered USB hub that can supply enough power to the card writer module. If the card writer module is not connected in this way, it may not operate correctly.*
- *This product may not operate correctly with some computers and USB expansion cards.*

[STEP1] Installing the Software

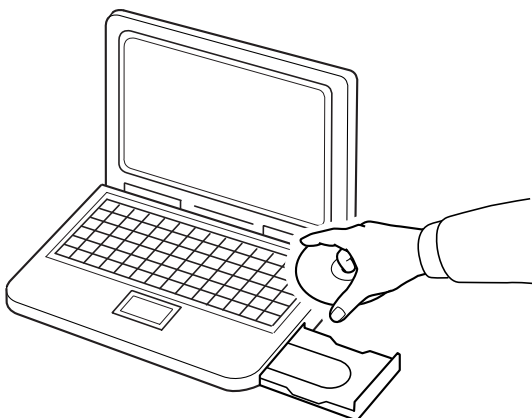
This section describes how to install the application software.



Note:

- If the installation is interrupted or not performed as described, the software will not be installed correctly.
- Before turning on the computer, be sure that the USB card writer module is **DISCONNECTED**.
- In order to install the software, you must log on to the computer using an account with administrator privileges. If you are not logged on with the Administrator account, the password for the Administrator account (Administrators) may be requested with Windows® 7. Type in the password to continue the procedure.

1. Insert the enclosed CD-ROM into the computer's CD-ROM drive.



■ Windows® XP users only

- After a short while, the language selection dialog box for InstallShield Wizard automatically appears.
Continue with step **4.** on page 8.



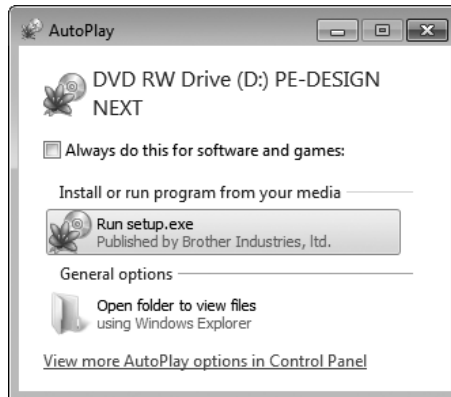
Memo:

If the installer does not automatically start up:

- 1) Click the **Start** button.
- 2) Click **Run**.
→ The **Run** dialog box appears.
- 3) Type in the full path to the installer, and then click **OK** to start up the installer.
For example: D:\setup.exe (where "D:" is the name of the CD-ROM drive)

■ For Windows® 7 or Windows Vista® users:

→ After a short while, the **AutoPlay** dialog box automatically appears.



Memo:

If the **AutoPlay** Dialog does not automatically start up:

- 1) Click the **Start** button.
- 2) Click **All Programs → Accessories → Run**.
→ The **Run** dialog box appears.
- 3) Type in the full path to the installer, and then click **OK** to start up the installer.
For example: *D:\setup.exe* (where "D:" is the name of the CD-ROM drive)

2. Click **Run setup.exe**.

→ The **User Account Control** dialog box appears.

3. Click **Yes**.



Memo:

This dialog box does not appear on Windows® XP. Continue with the next step.

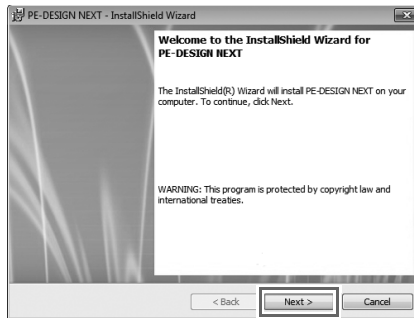
→ After a short while, the following dialog box automatically appears.

4. Select the desired language, and then click **OK**.



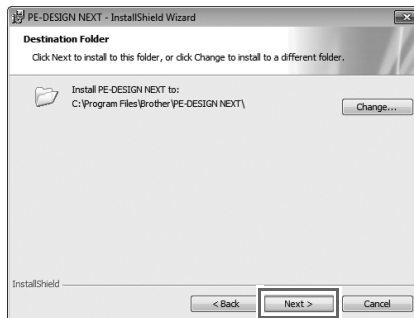
→ The InstallShield Wizard starts up, and the first dialog box appears.

5. Click **Next** to continue with the installation.



→ A dialog box appears, allowing you to select the folder where the software will be installed.

6. Check the installation location, and then click **Next**.



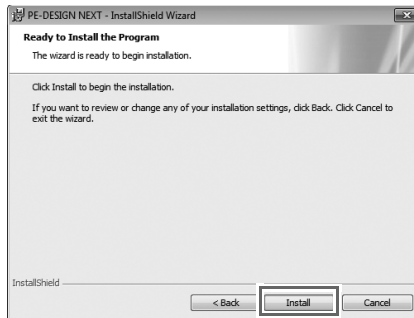
Memo:

• To install the application into a different folder:

- 1) Click **Change**.
- 2) In the **Change Current Destination Folder** dialog box that appeared, select the drive and folder. (If necessary, type in the name of a new folder.)
- 3) Click **OK**.
→ The **Destination Folder** dialog box of the InstallShield Wizard shows the selected folder.
- 4) Click **Next** to install the application into the selected folder.

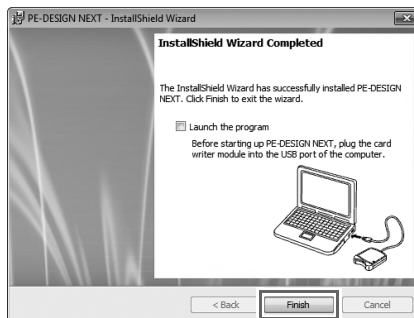
→ A dialog box appears, indicating that preparations for installation are finished.

7. Click **Install** to install the application.



→ When the installation is completed, the following dialog box appears.

8. Click **Finish** to complete the installation of the software.



Note:

This procedure also automatically installs the card writer driver. The card writer may now be connected to your computer. Make sure that PE-DESIGN NEXT starts up correctly.



Memo:

If the dialog box calling for restarting the computer appears, it is necessary to restart the computer.

[STEP2] Upgrading the USB Card Writer Module (For upgrade customer only)

This section describes how to upgrade the USB card writer module for PE-DESIGN NEXT. Users upgrading from PE-DESIGN version 5, 6, 7 or 8 must upgrade the card writer. After installing PE-DESIGN NEXT, immediately follow the procedure below to upgrade the card writer for PE-DESIGN NEXT.



Note:

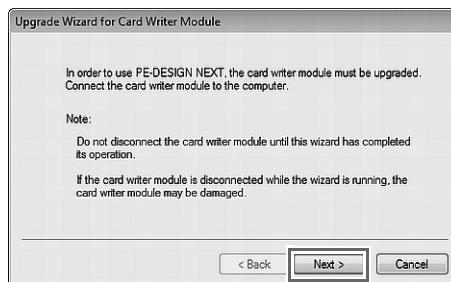
- In order to upgrade the USB card writer module, you must be able to connect to the Internet. If you cannot connect to the Internet, contact your authorized dealer or Brother Customer Service.
- It may not be possible to upgrade if a firewall is turned on. Turn off the firewall, and then try performing the operation again.

1. Start up Layout & Editing.
→ The dialog box shown below appears.
2. To begin the upgrade, click **Upgrade now**.

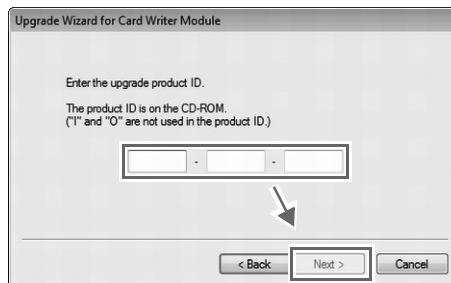


→ The Upgrade wizard starts up, and the first dialog box shown below appears.

3. Click **Next**.



4. Type in the 15-digit product ID on the label attached to the CD-ROM case, and then click **Next**.



Note:

- If the product ID is incorrectly entered, the message "The product ID is incorrect. Check that a mistake was not made during typing." appears.
- The uppercase letters "I" and "O" are not used in the product ID.
- Each product ID is valid for only one USB card writer module.
A product ID that has already been used cannot be used with a different USB card writer module.

→ The entered product ID and the serial number automatically retrieved from the USB card writer module is displayed.

5. Click **Next** to access our server through the Internet and retrieve the upgrade key.

Upgrade Wizard for Card Writer Module

In order to acquire the key, send the necessary information online.
The following two codes will be sent.

1. Upgrade CD product ID
AAAAA . AAAAA . AAAAA

2. Card writer module serial number(Automatically detected)
A6G999989

Make sure that you are connected to the Internet.
Click the Next button to send the data and automatically acquire the key.

< Back **Next >** Cancel



Note:

If a firewall is being used, set it so that the Internet can temporarily be accessed while the upgrade key is being obtained.

→ If the upgrade key has been successfully retrieved, the dialog box shown below appears.

6. Click **Next** to begin upgrading the USB card writer module.

Upgrade Wizard for Card Writer Module

The key was successfully acquired.
Click the Next button to begin upgrading the card writer module.

< Back **Next >** Cancel

→ If the upgrade has been completed successfully, the dialog box shown below appears.

7. Click **Finish**.

Upgrade Wizard for Card Writer Module

The card writer module was successfully upgraded.
We hope you enjoy using PE-DESIGN NEXT.

Finish



Note:

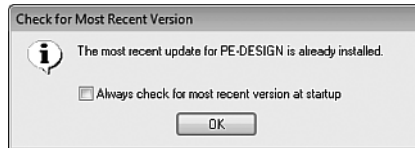
If a warning appears at any time, follow the instructions that are displayed.

Checking for the Latest Version of the Program

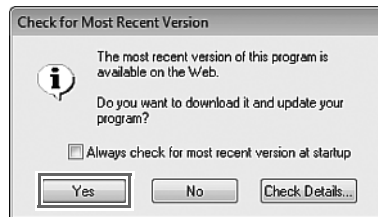
Click  in Layout & Editing, then **Check for Updates**.

The software is checked to determine whether or not it is the latest version.

If the message shown below appears, the latest version of the software is being used.

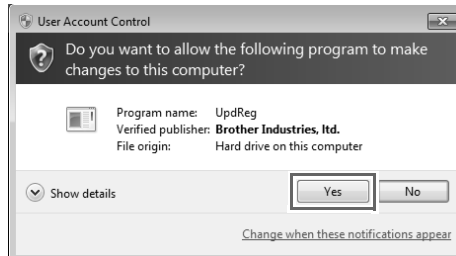


If the message shown below appears, the latest version of the software is not being used. Click **Yes**, and then download the latest version of the software from the Web site.



→ The **User Account Control** dialog box appears.

Click **Yes**.



Note:

- *This feature cannot be used if the computer is not connected to the Internet.*
- *It may not be possible to check for the latest version if a firewall is turned on. Turn off the firewall, and then try performing the operation again.*
- *Administrator privileges are required.*

Memo:

*If the **Always check for most recent version at startup** check box is selected, the software is checked at startup to determine whether or not it is the latest version.*

Technical Support

Contact Technical Support if you have a problem. Please check the company web site (<http://www.brother.com/>) to find the technical Support in your area. To view the FAQ and information for software updates, visit the Brother Solutions Center at (<http://solutions.brother.com/>).




Note:

Before contacting web site:

- 1) Please have your Windows® Operating System updated to the most current version.
- 2) The make and model number of the computer that you are using as well as the Windows® Operating System version.
- 3) Information about any error messages that appear.
This information will help expedite your questions more quickly.
- 4) Please check and update the software to the latest version.

Online Registration

If you wish to be contacted about upgrades and provided with important information such as future product developments and improvements, you can register your product online by following a simple registration procedure.

Click **Online Registration** on the  menu of Layout & Editing to start up the installed Web browser and open the online registration page on our Web site.


<http://www.brother.com/registration/>



Memo:

Online registration may not be available in some areas.

Uninstallation

1. Click the  button in the task bar, and then click **Control Panel**.
2. In the **Control Panel** window, select **Programs and Features**.
3. In the **Programs and Features** window, select this software, and then click **Uninstall**.



Memo:

- The uninstallation procedure is described for Windows® 7 and Windows Vista®.
- For Windows® XP, click the **Start** button, then **Control Panel**. Double-click **Add or Remove Programs**. Select this software, and then click **Remove**.

