

front 黑色



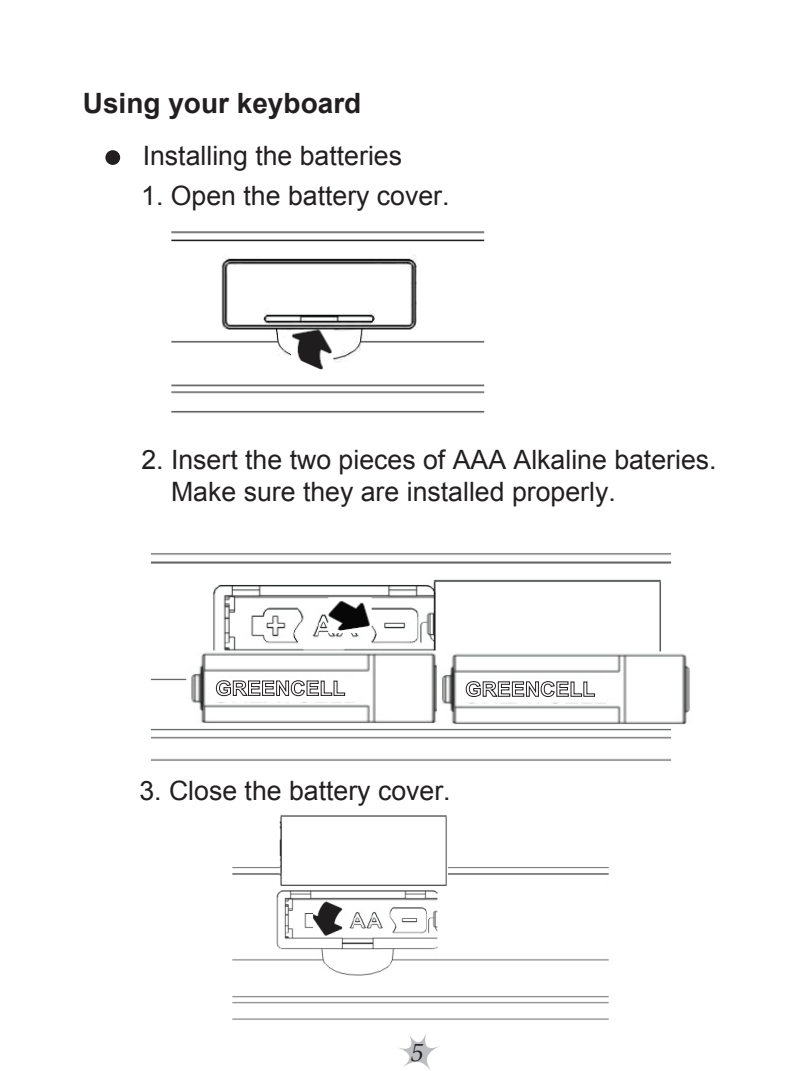
BT-500



Bluetooth keyboard

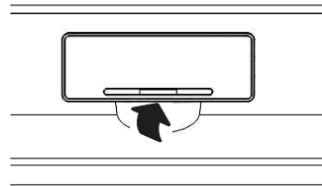
USER'S MANUAL

back 黑色

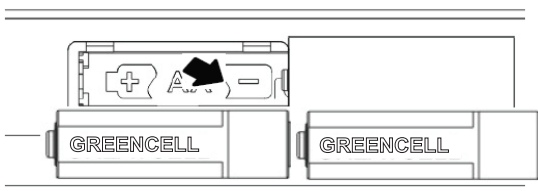


Using your keyboard

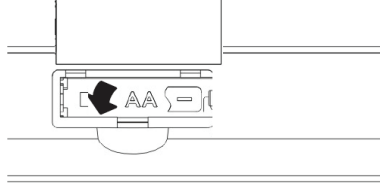
- Installing the batteries
 1. Open the battery cover.



2. Insert the two pieces of AAA Alkaline batteries. Make sure they are installed properly.



3. Close the battery cover.



Introduction

Congratulations on your purchase of a high-quality ZIPPY product. Your BT-500 Bluetooth® Keyboard represents the state of the art in wireless Bluetooth Keyboard design and is designed for reliable and trouble-free performance.

Safety

Before getting started, read these instructions and save them for future reference.

- Do not drop or hit your Keyboard.
- Do not use your Keyboard in a location that is subject to strong vibrations because vibration may damage your Keyboard.
- Do not disassemble or modify the product in any way. Disassembly or modification may void your warranty and could damage your Keyboard leading to a fire or electric shock.
- Do not use or store your Keyboard in damp locations. Liquid entering the product may cause damage or lead to fires or electric shock.
- Do not insert metal objects, such as coins or paper clips, into your Keyboard.
- Your Keyboard is for general device use. Do not use your Keyboard with a device that requires exceptional reliability, especially if a breakdown or malfunction of might jeopardize life or health, such as aerospace equipment, atomic power control

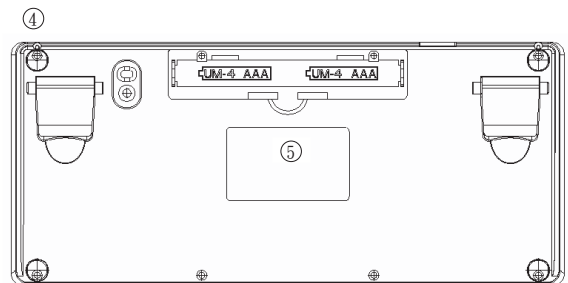
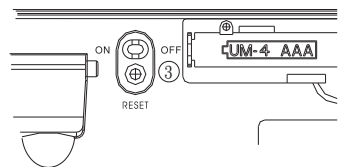
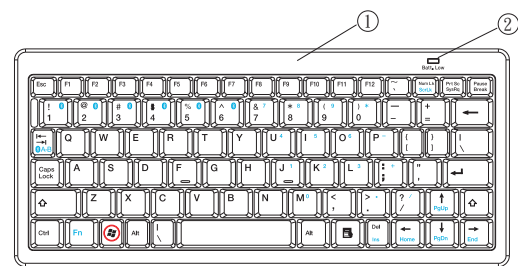
systems, traffic-related equipment, transportation equipment, industrial robotics, combustion equipment, safety devices, and life-support systems.

- Batteries may explode or leak if they are improperly recharged, inserted, disposed of in fire, or mixed with used batteries or different battery types. There is a risk of explosion if a battery is replaced incorrectly.
- Dispose of used batteries according to local regulations.
- Keep the battery compartment cover and the batteries out of the reach of small children.

Features

- Bluetooth® 2.0 interface (compliant with Bluetooth 1.0).
- Communicate with smartphone device available.
- Certified for Telecom safety.
- Transmission range up to 10 meters.
- Ultra-thin Compact size and low power consumption.
- Memorize up to six Bluetooth hosts and fast switch up to each other.

Keyboard components



Component	
1.	Top Cover
2.	Batt.Low
3.	Power switch and Pairing/Reset button
4.	Foot pad
5.	Label

LED indicators

Your keyboard has an LED indicator that indicates keyboard status.

- Flashing— battery low indicator.

Package contents

- AAA alkaline batteries (2 PCS)
- Keyboard
- User Guide

System requirements

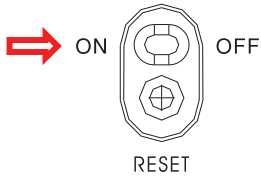
Your device must meet these requirements:

- Microsoft Windows ME , Windows 2000, Windows XP x32/ x64, Windows Vista, Windows 7 operating system
- Bluetooth-enabled device
- Existing keyboard for setup

Installing your keyboard

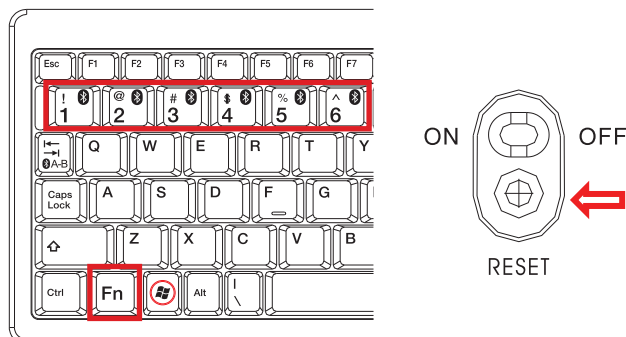
- Installing Bluetooth keyboard in first device or Bluetooth host

1. Turn on your device or Bluetooth host and make sure that your Bluetooth device is set to search mode.
2. Switch Bluetooth keyboard power to ON position.



3. Press "Fn" + "F1" on the Bluetooth keyboard, and then, click the **RESET** to activate Bluetooth discovering and set the FIRST device as ID 1.

* Indicator LED on the top of keyboard will blink during pairing stage.



4. Launch the Bluetooth program (ex, Microsoft Windows control panel) in the FIRST device.
5. Add (search) for new devices. You should be able to find a new device "Bluetooth Keyboard".
6. During the connection process, it will provide a pass CODE for pairing. Enter the pass CODE from the keyboard.
7. Wait for adding a new HID device "Bluetooth Keyboard" into the system.

- Installing Bluetooth keyboard in second to sixth device or Bluetooth host

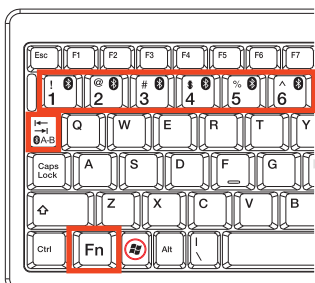
1. Press "Fn" + "F2" ~ "F6" on the Bluetooth keyboard, and then, click the **RESET** to activate Bluetooth discovering and set the devices as ID 2 ~ ID 6.
2. The rest steps are the same as you installed it in first device.

- Switching to the desired device

1. Press "Fn" + "F7" ~ "F8", you can use Bluetooth keyboard in the paired device.

Or

2. Press "Fn" + "F9" to return to the previous device.



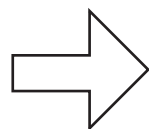
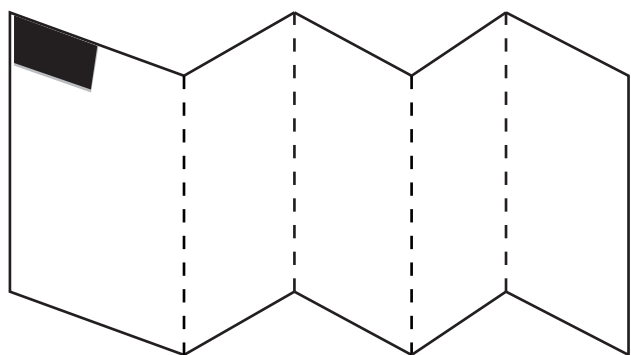
Troubleshooting

- Make sure that you have paired your keyboard with your device. For more information, see "Installing your keyboard" on page 6.
- Make sure that your operating system is compatible with your keyboard. For more information, see "System requirements" on page 4.
- Make sure that the anode(+) and cathode(-) symbols on the batteries match the anode(+) and cathode(-) symbols in the battery compartment.
- Low-Battery is indicated by the illumination of the Keyboard Top case "Batt.Low". Please replace the battery when the LED lights up.

Specifications

Dimension: Keyboard: 225 (L)×99 (W)×23.5(H) mm
Keys No: Keyboard: 83 keys(UA) / 82 keys(US/UK)
Weight: Keyboard: 300±25g (w/o battery)
Key Pitch: 19.0 mm
Interface: Bluetooth
Compatibility: Windows ME, Windows 2000, Windows XP x32/ x64, Windows Vista, Windows 7
Operating Temperature: 32°F ~ 104°F (0°C ~ 40°C)
Operating Humidity: 85% RH or less
Storage Temperature: 5°F ~ 140°F (-15°C ~ 60°C)
Storage Humidity: 85% RH or less

折法: 左右S折, 封面朝外



注意:

1. 須正反面(雙面)印刷, 印刷單黑(內文彩色部分印刷單黑)
2. 印刷面不可產生影像模糊或有餘影
3. 裁切邊不可有裁切不良現象
4. 交貨時, 需左右S折, 封面需朝正面